

# PRODUCT

## CATALOG


Dust Collectors  
Sandblasters  
HEPA Filtration  
Fume Extraction

Accessories & Parts  
Replacement Filters

Custom Suction System Design Service



# CONTENTS

	Dust Collectors 3-5
	Sandblasters 6-8
	Enclosed Dust Collection Accessories 9
	HEPA Air Cleaners 10-11
	Filters 12
	Other Dust Collection Accessories 13-19
	Switches and Remotes 20
	Sandblaster Tips and Media 21
	Design Center 22

# ABRASIVE VAC

Part Number 10660

Compact single station dust collector designed for sandblaster units.

### Features

- Powerful long-life bypass motor designed for sandblaster units specifically
- Pre-filter cyclone Accumulator included to capture media, extending the life of the filter
- Remote foot pedal ON/OFF included
- Power outlet to activate sandblaster LED light
- Low Maintenance
- Easy filter bag replacement
- Quiet operation



### Specifications

10.75 in. x 14.25 in. x 13.5 in.  
Weight: 43 lbs.

# VAN-I-VAC

Part Number 10600

Dust collector designed for a single workstation.

### Features

- Powerful motor for one workstation
- Adjustable speed
- Easy filter bag replacement
- Quiet operation
- Low Maintenance
- Easy filter bag replacement
- Quiet operation



### Specifications

10.5 in. x 14 in. x 14.5 in.  
Weight: 35 lbs.

### Options

Pre-filter cyclone accumulator

Various remote control options

Internal HEPA filter (add-on Part Number 97016)

External HEPA filter with fram (add-on Part Number 97017)

Internal odor filter (add-on Part Number 96013)

External odor filter with frame (add-on Part Number VMC-A420)

# VOYAGER

Part Number 10630

Dust collector for 1-2 workstations.

### Features

- Powerful high-performance motor for 1-2 workstations
- Adjustable speed
- Easy filter bag replacement
- Low Maintenance
- Easy filter bag replacement
- Quiet operation



### Specifications

10.5 in. x 14 in. x 14.5 in.  
Weight: 35 lbs.

### Options

Pre-filter cyclone accumulator

Various remote control options

Internal HEPA filter (add-on Part Number 97016)

External HEPA filter with fram (add-on Part Number 97017)

Internal odor filter (add-on Part Number 96013)

External odor filter with frame (add-on Part Number VMC-A420)

## SMALL DUST COLLECTOR MAINTENANCE

- Filter Bags:
  - 3-pack: Part Number VMC-A400-3
  - 5-pack: Part Number VMC-A400-5



## STONEVAC II

Part Number 10201

High-volume dust collector for 1-2 workstations.

### Features

- Powerful, long-lasting turbine motor
- HEPA filtration with easy access door



## STONEVAC II+

Part Number 10202

High-volume advanced dust collector for 1-2 workstations.

### Features

- Powerful, long-lasting turbine motor
- Autopilot syncing with handpiece for automatic on/off
- HEPA filtration with easy access door



## STONEVAC BRUSHLESS SC

Part Number 10237

High-volume heavy dust collector for 1-4 workstations.

### Features

- Powerful brushless motor for extensive use
- Adjustable speed
- AutoPilot syncing for automatic operation
- HEPA filtration with easy access door
- Contact Vaniman about syncing with milling machines



## STONEVAC AM

Part Number 11051

High-volume heavy dust collector for additive manufacturing processes.

### Features

- Powerful brushless motor and filter for heavier dust, powder, and particulates from additive manufacturing processes
- Printer syncing for automatic operation
- Durable rolling wheel casters
- Class II, Division 2 vacuum
- HEPA filtration with easy access door
- Pre-filter cyclone Accumulator included

### STONEVAC SERIES MAINTENANCE

- Replaceable HEPA cartridge (Part Number 97001)
- Dust Bin Bags (Part Number 97002)

All StoneVac models offer remote control, Accumulator, & multi-station options. Contact Vaniman for details.

### Specifications

10 in. x 15 in. x 24.5 in.  
Weight: 54 lbs.

# V6 SE

Part Number 10281

Powerful dust collector for up to 6 workstations simultaneously.

## Features

- SmartSpeed Technology automatically adjusts motor speed & power depending on which stations are in use at one time
- HEPA Filtration
- Push-button "Air Pulse" filter maintenance system
- Large dust collection tray
- Inlet plate for 2.5 in., 3 in., or 4 in. plumbing sizes available

## V6 Maintenance

- Replaceable HEPA cartridge (Part Number 96017)
- Replaceable cooling air filter (Part Number 2511)

## Options

Free service: **Design Center**

For optimal suction systems

CAD renderings and instructions for entire lab layout

Endless remote/valve combinations available

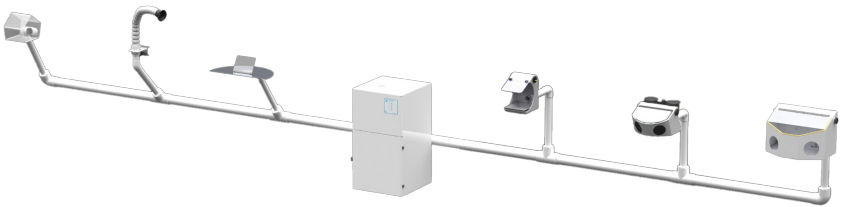
Contact Vaniman for suggested plumbing



## Specifications

21 in. x 20 in. x 36 in.

Weight: 136 lbs.



Inquire about Design Center service for customization and optimization of suction systems.  
(See more on page 22.)



DESIGN CENTER

# MOBILE PROBLAST/MASTER MOBILE PROBLAST

Part Number 80017/80031

Portable sandblaster for light use.

## Features

- 1000 mL media tank (25–50 µm, 50–100 µm or 110–250 µm range)
- Pen-nozzle handpiece with precision tip
- “Master” variant includes instant-off functionality

## Options

- Glass etcher variant available (Part Number 80038) – tank and tip upgrade for professional glass etching results



## Specifications

8 in. x 6 in. x 10.5 in.  
Weight: 10 lbs.

# BLAST IT! RECIRCULATING GUN SIPHON BLASTER

Part Number VMC-X70

Siphon blaster for walnut shell blasting.

## Features

- Pitsol-grip blasting gun
- Media recirculates from reservoir
- Heavy duty flexible gloves
- Indestructible resin cabinet
- Bright internal LED lighting

## Maintenance

- Microabrasive blasting media refill
- Replacement gun assembly (Part Number 98103)
- Replacement gloves (Part Number 97944)



## Specifications

23 in. x 22 in. x 19 in.  
Weight: 30 lbs.

External dust collector required; recommended unit:  
Abrasive Vac (unit Part Number 10660) or StoneVac series

All Vaniman sandblasters require compressed air.  
Minimum requirements: 90 PSI at 1.5 CFM (recommended 2.5 CFM).

Contact Vaniman for details.

# PROBLAST/MASTER PROBLAST

Part Number 80008/80020

Large work area heavy use sandblaster.

## Features

- 2 selectable 1000 mL media tanks (25-50 µm, 50-100 µm or 110-250 µm range)
- 2 pen-nozzle handpieces with precision tips
- Extra-large blast-proof cabinet
- Bright internal LED lighting
- "Master" variant includes instant-off functionality



## Specifications

23 in. x 22 in. x 19 in.

Weight: 30 lbs.

External dust collector required; recommended unit:  
Abrasive Vac (unit Part Number 10660) or StoneVac series

# PROBLAST 2/MASTER PROBLAST 2

Part Number 80007/80355

Compact sandblaster for moderate to heavy use.

## Features

- 2 selectable 1000 mL media tanks (25-50 µm, 50-100 µm or 110-250 µm range)
- 2 pen-nozzle handpieces with precision tips
- Durable, blast-proof cabinet
- Bright internal LED lighting
- "Master" variant includes instant-off functionality



## Specifications

16.5 in. x 16.5 in. x 10.5 in.

Weight: 21 lbs

External dust collector required; recommended unit:  
Abrasive Vac (unit Part Number 10660) or StoneVac series



# PROBLAST 3/MASTER PROBLAST 3

Part Number 80070/80060

Large sandblaster for high volume work.

## Features

- 3 selectable 1000 mL media tanks (25–50 µm, 50–100 µm or 110–250 µm range)
- 3 pen-nozzle handpieces with precision tips
- Large steel cabinet
- Bright internal LED lighting
- “Master” variant includes instant-off functionality



## Specifications

18 in. x 22 in. x 15 in.

Weight: 27 lbs.

External dust collector required; recommended unit: Abrasive Vac (unit Part Number 10660) or StoneVac series

# MASTER PROBLAST 3 ESD

Part Number 80056

Large sandblaster for electronics and electro-sensitive items.

## Features

- 3 selectable 1000 mL media tanks (25–50 µm, 50–100 µm or 110–250 µm range)
- 3 pen-nozzle handpieces with precision tips
- Large steel cabinet
- Bright internal LED lighting
- Instant-off functionality
- Continuously conductive environment to prevent electrostatic discharge



## Specifications

18 in. x 22 in. x 15 in.

Weight: 30 lbs.

External dust collector required; recommended unit: Abrasive Vac (unit Part Number 10660) or StoneVac series

All Vaniman sandblasters require compressed air.  
Minimum requirements: 90 PSI at 1.5 CFM (recommended 2.5 CFM).

Contact Vaniman for details.



# CUT & CLEAN CABINET

Part Number 80074

Dust cabinet solution for applications where dust needs to be contained.

### Features

- Handheld air nozzle with left or right mounting option
- Bright internal LED lighting



### Specifications

12.5 in. x 16.5 in. x 10.5 in.

Weight: 20 lbs.

External dust collector recommended

# CUT & CLEAN XL CABINET

Part Number 80075

Large, durable dust cabinet solution for applications where dust needs to be contained.

### Features

- Handheld air nozzle with left or right mounting option
- Durable steel casing
- Bright internal LED lighting
- Rubber grommets to feed through cords or tubing from electric or pneumatic accessories



### Specifications

18 in. x 22 in. x 15 in.

Weight: 25 lbs.

External dust collector recommended

# VANiCAB ETCHING CABINET

Part Number 80403

Durable etching cabinet with built-in dust collection.

### Features

- Rugged, durable design
- Removable debris tray for media capture
- Self contained replaceable dust fan and filter system
- Bright internal LED lighting



### Specifications

15 in. x 14.5 in. x 12 in.

Weight: 18 lbs.

# PURE BREEZE HEPA AIR PURIFIER

Part Number 10360

HEPA filter air purifier for aerosol safety and air quality improvement.

## Features

- Lab grade HEPA filtration
- Durable casters for portability
- Tested and proven to significantly reduce contaminant aerosols in indoor workspaces
- High-suction turbine motor
- Adjustable speed
- Quiet 56 dBA operation thanks to sound dampening technology

## Maintenance

- Stage 1 heavy particulate pre-filter (Part Number 97021)
- Stage 2 secondary filter (Part Number 97022)
- Stage 3 charcoal odor filter (Part Number 97023)
- Stage 4 HEPA filter (Part Number 97024)

## Options

Wall or ceiling-mounted Fume Hood version (unit Part Number 10371) or benchtop shield Fume Hood version (add-on Part Number 10373) available; see website for details.

## Pure Breeze HEPA Air Purifier Filters (All Configurations)

- Stage 1 heavy particulate pre-filter (Part Number 97021)
- Stage 2 secondary filter (Part Number 97022)
- Stage 3 charcoal odor filter (Part Number 97023)
- Stage 4 HEPA filter (Part Number 97024)

## HEPA Filter Specifications

17.75 in. x 14.75 in. x 4 in.

Internal; designed for Pure Breeze HEPA Air Purifier (all variants: Part Numbers 10360, 10370, or 10372)

Certified HEPA — captures at least 99.97% of all particulates down to 0.3  $\mu$ m



## Specifications

19 in. x 15.5 in. x 29.5 in.

Weight: 67 lbs.



## Benchtop Working Dimensions (Inside Benchtop Cabinet)

33 in. x 18 in. x 18 in.



## Fume Hood Unit Specifications

37.8 in. x 24.8 in. x 20.3 in.

Weight: 70 lbs.

# PURE BREEZE FX HEPA FUME EXTRACTOR

Part Number 10380

HEPA filter portable fume extraction vacuum.

### Features

- Lab grade HEPA filtration
- Durable casters for portability
- Internal charcoal filter to capture odors
- Foot pedal start/stop
- High-suction turbine motor
- Adjustable speed
- Adjustable, flexible extra rigid capture hose
- Quiet 54 dBA operation thanks to sound dampening technology

### Maintenance

- Charcoal odor filter (Part Number 97095)
- Internal HEPA filter (Part Number 96097)

### Pure Breeze FX Filters

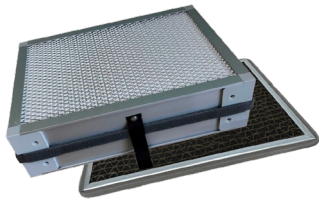
- Charcoal odor filter (Part Number 97095)
- Internal HEPA filter (Part Number 96097)

### HEPA Filter Specifications

14 in. x 10 in. x 4 in.

Internal; designed for Pure Breeze FX HEPA Fume Extractor (Part Number 10380)

Certified HEPA — captures at least 99.97% of all particulates down to 0.3 µm



### Specifications

Base: 10 in. x 14 in. x 21.5 in.

Hose length (assembled): 56 in.

Hose diameter: 3 in.

Weight: 39 lbs.

Charcoal odor filters in all Pure Breeze series units capture a wide range of chemical compounds. See website for extensive list and adsorptive ability rating for each.

USE CAMERA



FILTER  
REPLACEMENT  
INFORMATION

# STONEVAC HEPA FILTER

Part Number 97001

HEPA filter cartridge for StoneVac series dust collectors.

## Filter

- Heavy duty HEPA filter material
- Cylindrical shape
- Designed to work with shaker motor for self-cleaning

## Options

Separate dust bin bags for easy dust disposal (Part Number 97002)



## HEPA Filter Specifications

Internal; designed specifically for StoneVac series dust collectors

Diameter: 7 in.

Height: 7.75 in.

Certified HEPA — captures at least 99.97% of all particulates down to 0.3  $\mu\text{m}$

# V6 HEPA FILTER

Part Number 96017

HEPA filter cartridge for V6 dust collector.

## Filter

- Heavy duty HEPA filter material
- Cylindrical shape
- Designed to work with Air Pulse filter maintenance system for self-cleaning

## HEPA Filter Specifications

Internal; designed specifically for V6 dust collectors

Diameter: 10.25 in.

Height: 7.25 in.

Certified HEPA — captures at least 99.97% of all particulates down to 0.3  $\mu\text{m}$



# FILTER BAGS

3-pack: Part Number VMC-A400-3

5-pack: Part Number VMC-A400-5

Replacement filter bags for various dust collectors.

Designed for use in Abrasive Vac, Vani-I-Vac, and Voyager dust collectors.



## Filter Bag Specifications

Internal; designed to work with a variety of Vaniman dust collectors

Filters 97% of particulates down to 1  $\mu\text{m}$

See website for installation instructions and other information

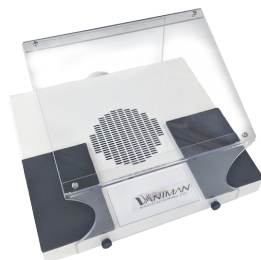
# DOWNDRAFT

Part Number 96044

Benchtop semi-enclosed dust collection station for hand pieces.

## Features

- Shielded work area
- Downward suction of dust and debris
- Padded wrist rests
- Adjustable vent areas
- Compatible with most Vaniman dust collectors



# DOWNDRAFT PRO

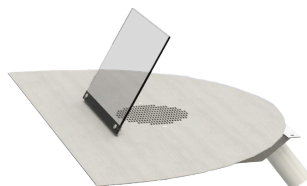
With Corner: Part Number 96060

With Flat Edge: Part Number 96061

Dust collection station designed for one workstation.

## Features

- High quality stainless steel panel
- Removable debris shield
- Downward suction of dust and debris
- Flat working area
- Catch-pan underneath
- Compatible with most Vaniman dust collectors



# DOWNDRAFT DRAWER

Part Number 96053

Dust collection station designed to fit into a standard drawer space.

## Features

- Pop-up protective shield
- Downward suction of dust and debris
- Telescoping rear plumbing
- Integrated remote switch
- Compatible with most Vaniman dust collectors





Height: 13.25 in.

## SMALL ACCUMULATOR

Part Number VMC-A100

Small pre-filter cyclone accumulator for dust collectors.

### Features

- Up to 95% cyclonic separation rate of particles down to 0.3  $\mu\text{m}$ ; separates 99% of metals
- Small removable capture bucket – 1/8 gal. (1/2 qt.)
- Highly durable molded plastic
- Extends dust collector filter efficiency and motor life



Height: 24 in.

## LARGE ACCUMULATOR

Part Number VMC-A300

Large pre-filter cyclone accumulator for dust collectors.

### Features

- Up to 95% cyclonic separation rate of particles down to 0.3  $\mu\text{m}$ ; separates 99% of metals
- Large removable capture bucket – 1/2 gal. (2 qt.)
- Highly durable molded plastic
- Extends dust collector filter efficiency and motor life



Height: 30 in.

## ACCUMULATOR XL

Part Number 10509

Extra large pre-filter cyclone accumulator for dust collectors.

### Features

- Up to 95% cyclonic separation rate of particles down to 0.3  $\mu\text{m}$ ; separates 99% of metals
- Extra large removable capture bucket – 1.5 gal. (6 qt.)
- Highly durable molded plastic
- Extends dust collector filter efficiency and motor life



Height: 24 in.

## ESD ACCUMULATOR

Part Number 10519

Pre-filter cyclone accumulator designed to prevent electrostatic discharge.

### Features

- Highly durable molded ESD-resistant plastic prevents electrostatic discharge during suction/separation
- Up to 95% cyclonic separation rate of particles down to 0.3  $\mu\text{m}$ ; separates 99% of metals
- Large removable capture bucket – 1/2 gal. (2 qt.)
- Extends dust collector filter efficiency and motor life

Contact Vaniman about larger bucket size options.



## SPLASH HOOD

Part Number 96045

Dust collector accessory work area designed for a 6" wheel.

### Features

- Adjustable clear shield
- Removable debris tray
- Bright LED lighting for work area



## SPLASHVAC

Part Number 96046

Self-contained dust collector work area designed for a 6" wheel.

### Features

- Built-in vacuum fan and filter
- Adjustable clear shield
- Removable debris tray
- Bright LED lighting for work area



## CLEANING KIT FOR DUST COLLECTORS

Part Number 10511

Accessories for additional cleaning using a dust collector.

### Features

- Dust brush head tool
- Crevice/corner head tool
- 2 station selector valve T (to switch between regular function suction and cleaning extension hose)
- 10 ft. hose



## THE MUFFLER

Part Number 96028

Accessory to significantly dampen suction sound at dust collection points.

### Features

- Connects to 2.5" suction hoses, or to 1.5" suction hoses with reducer (Part Number VMC-1006A)
- 2 reducers included



## JET PORT

Part Number VMC-A440

Workstation suction port for dust collection.

### Features

- High quality grained wood from farmed American oak, ideal for preserving integrity of tools and work
- Wire mesh capture screen



## JET PORT WITH COMFORT ZONE

For 1.5" hose: Part Number VMC-A441

For 2.5" or 3" hose: Part Number 10507

Workstation suction port for dust collection with luxurious wrist padding.

### Features

- Padded wrist rests
- High quality grained wood from farmed American oak, ideal for preserving integrity of tools and work
- Wire mesh capture screen



## MOBILE JET PORT

Part Number VMC-A442

Removable workstation suction port.

### Features

- High quality grained wood from farmed American oak, ideal for preserving integrity of tools and work
- Wire mesh capture screen



# POLY GUARD II SHIELD

Part Number VMC-A398

Polygonal 360-degree enclosed tabletop work area.

## Features

- Durable polycarbonate
- Wire mesh capture screen
- Connects to 2.5" or 1.5" suction hose



# FISH MOUTH PLUS W/FLEXSHIELD

With shield: Part Number 10503

Without shield: Part Number VMC-A395

Movable open steel suction port with flexible neck holding a protective shield.

## Features

- High quality durable steel mouth
- Flexible neck
- Adjustable clear shield
- Wire mesh capture screen
- Connects to 2.5" or 1.5" suction hose



# FLEXSHIELD

Part Number VMC-A391

Flexible neck holding a protective shield for a variety of workstation equipment, walls, or cabinetry.

## Features

- Universal mounting: adhesive, magnetic, or fixed
- Flexible neck
- Adjustable clear shield



## FLEX HOSE KIT

Part Number 96026

Flexible suction hose and port for benchtop, benchside or wall installation.

### Features

- 3 ft. flexible linked suction hose
- Wide-mouth collection opening
- Connects to 3" PVC pipe, 2.5" suction hoses, or 1.5" suction hoses with included reducer

### Options

Manual Shut Off Valve (add-on Part Number Number 96062)



## FLEX HOSE PLUS KIT

Part Number 96113

Extra-rigid flexible suction hose and port for benchtop, benchside or wall installation.

### Features

- Wide bulb-nozzle collection mouth
- Extra rigid hose with twistable rigidity adjustment
- Connects to 3" PVC pipe, 2.5" suction hoses, or 1.5" suction hoses with included reducer



## FLEX HOSE ESD KIT

Part Number 96108

Flexible electrostatic discharge resistant hose and port for benchtop, benchside or wall installation.

### Features

- 3 ft. flexible linked suction hose
- Links made of durable electrostatic discharge resistant plastic material
- Wide-mouth collection opening
- Connects to 3" PVC pipe, 2.5" suction hoses, or 1.5" suction hoses with included reducer

### Options

Manual Shut Off Valve (add-on Part Number Number 96062)



# PNEUMATIC VALVE

Part Number 10518

Vaniman’s plumbing solution for smart suction systems.

## Features

- Opens or shuts to close off plumbing channels to optimize suction around an entire work area or lab
- Manual or automated remote control (either with a Smart Switch or a Smart AutoPilot)
- Powered by compressed air (15 PSI max)

Contact Vaniman for plumbing configuration.



# SMART SWITCH

Part Number 96068

Manual control device for Pneumatic Valves.

## Features

- Toggles pneumatic operation of the valve to dust collection accessories
- Remotely starts/stops dust collector unit

Contact Vaniman for plumbing configuration.



# AUTOPILOT

Part Number 96073

Advanced control box for Vaniman Smart System.

## Features

- Automatic dust collector ON/OFF while using hand piece or lathe
- Opens/closes pneumatic valves (15-20 psi max) while using hand piece
- Auto-calibration to handpiece
- Digital display screen
- Digital adjustable range control
- Built-in “Dust Delay Timer” allows dust collection after stopping

Contact Vaniman for plumbing configuration.



# SWITCHES AND REMOTES

Name	PN	Description
Remote On/Off Switch	VMC-A450	6 ft. ON/OFF extension for Voyager/Van-I-Vac dust collectors
Dual Remote On/Off Switch	VMC-A455	Two-station ON/OFF extension for Voyager/Van-I-Vac dust collectors
Foot Remote Switch	VMC-A460	Remote ON/OFF extension for Voyager/Van-I-Vac dust collectors
StoneVac On/Off Clean Remote	10203	6 ft. ON/OFF/CLEAN extension for StoneVac II
Foot Pedal Remote	1443	Remote ON/OFF air foot pedal (bellows with tube) for Abrasive Vac or Pure Breeze FX.
Control Switch for Pneumatic Valve	10522	Manual control switch for pneumatic tubes
Smart Switch for Combining Box	96068B	ON/OFF switch for dust collector with 3.5mm remote ports
Smart Switch	96068	ON/OFF remote switch for dust collectors that also opens/closes pneumatic valves
AutoPilot	96073	Enables dust collector activation and pneumatic valve control by one micromotor handpiece or lathe (5A max each)
AutoPilot Air Add-On	96122	Enables dust collector activation via AutoPilot by an air driven handpiece
Remote Combining Box	96069	Hub for multiple remote switches to operate a Voyager or StoneVac II dust collector
Standard Remote Hub	96109	Hub for multiple remote switches to activate StoneVac II+, StoneVac Brushless SC, or V6 SE dust collector
SmartSpeed Remote Hub	96111	Hub for multiple remote switches to activate V6 SE dust collector and control motor speed.

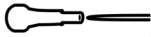
# MILL REMOTES

Name	PN	Description
Mill Remote - Lava 3-Prong	10514	Remote switch for Lava brand mills
Mill Remote - Yenadent 9-Pin Female	10520	Remote switch for Yenadent brand mills
Mill Remote - Zirkonzahn 3-Prong	10523	Remote switch for Zirkonzahn brand mills
Mill Remote - Digital Dental Dual Connector	10525	Remote switch with dual connection for Digital Dental brand mills
Mill Remote - Roland 3.5mm Aux.	11054	Remote switch for Roland mills and engravers
Mill Remote - 4-Pin Female	11063	Remote switch for A5, C5, C6, and other dental mills
Mill Remote - LaserDental 3-Pin	96054	Remote switch for LaserDental brand mills
Mill Remote - 4-Pin	96059	Remote switch for Wieland, Zenotec, VHF, Preciso M200 (Jensen), MasterMill, BruxZir (Glidewell), CAM 4-K4, CAM 5-S1, CAMV 5-S2, and other dental mills
Mill Remote - imes-icore 9-Pin Female	96077	Remote switch for imes-icore dental mill
Mill Remote - VHF K5 Impression 6-Pin	96078	Remote switch for VHF K5 Impression dental mill
Mill Remote - MAXX 4-Pin Male	96124	For Maxxmill 5Z

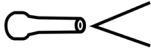
# SANDBLASTER NOZZLE TIPS

Tip	PN	Size	Recommended media
Yellow (Small Tungsten Carbide)	97905	0.026 in. (0.65 mm)	25 µm Al2O3
Blue (Medium Crystal)	97902	0.032 in. (0.8 mm)	25 µm Al2O3, 50 µm Al2O3
Green (Medium Tungsten Carbide)	97906	0.036 in. (0.91 mm)	50 µm Al2O3, 50 µm Glass Bead, 50-100 µm NaHCO3, 100 µm Al2O3
Black (Large Crystal)	97903	0.048 in. (1.2 mm)	50 µm Al2O3, 50 µm Glass Bead, 50-100 µm NaHCO3, 100 µm Al2O3
Violet (Large Tungsten Carbide)	97907	0.059 in. (1.5 mm)	50 µm Glass Bead, 50-100 µm NaHCO3, 100 µm Al2O3, 250 µm Al2O3
Red (Extra Large Crystal)	97904	0.065 in. (1.6 mm)	100 µm Al2O3, 250 µm Al2O3

Tungsten Carbide tips offer linear, pinpoint-precision media delivery.



Sapphire crystal tips offer conical, evenly distributed media delivery.



# SANDBLASTING MEDIA

Material		PN		
		1 Tank (~4 lbs.)	15 lbs.	50-55 lbs.
25 µm "VanOxide" Aluminum Oxide (Al2O3)	▲	97935	97921	98201
50 µm "VanOxide" Aluminum Oxide (Al2O3)	▲	97936	97922	97927
100 µm "VanOxide" Aluminum Oxide (Al2O3)	▲	97937	97923	98202
250 µm "VanOxide" Aluminum Oxide (Al2O3)	▲	97938	97924	98203
50 µm "VanGlass" Glass Bead	●	97939	97925	98204
50-100 µm Sodium Bicarbonate (NaHCO3)	▲	98200	97934	98206
200 grit Walnut Shell	▲	-	97933	-
40/100 grit Walnut Shell	▲	-	97932	98207
40/40 grit Walnut Shell	▲	-	-	97931

- ▲ Grain shape: angular
- Grain shape: spherical

# DESIGN CENTER

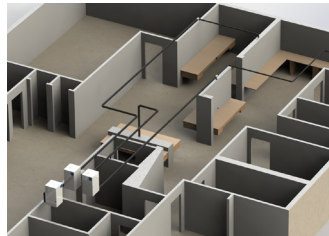
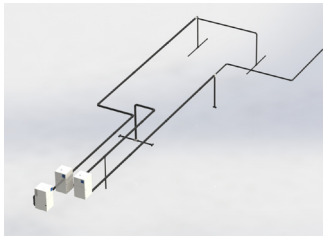
The Vaniman Design Center is a FREE professional design service for optimizing suction and plumbing efficiency for multiple workstations with dust collection.

Don't let indecision keep your dream setup out of reach — let Vaniman figure out the best solution for you!

First, you provide us with your physical space layout and your ideas for what needs improvement, expansion, or a brand-new setup entirely.

Then, we provide you with 3D CAD renderings of your setup that include plumbing and equipment, showing you the ideal way to maximize your suction at each station and keep your power bills as low as possible.

Our custom designed smart systems allow for unique workstation functionality, and we provide a specific list of the best setup to use so there's no guesswork.



Reach out to Vaniman by phone to start your FREE 3D design.

1.800.VANIMAN  
sales@vaniman.com





[www.vaniman.com](http://www.vaniman.com)

or

follow us on social media.



## VANIMAN MANUFACTURING CO.

Family owned and operated since 1985.

Our products are assembled and built by hand in our Southern California facility. We test each unit prior to shipping.

Our mission is to solve problems by creating high quality products that are reliable and easy to maintain.

Our product lineup can be found in this catalog or online at:

[www.vaniman.com](http://www.vaniman.com)

1.800.VANIMAN  
[sales@vaniman.com](mailto:sales@vaniman.com)



COPYRIGHT © 2025 VANIMAN MANUFACTURING CO.