



# DENTAL

## PRODUCT CATALOG

Workstation Dust Collectors  
Dental Sandblasters

CAD/CAM Dust Extractors  
Workstation Accessories

Lab Suction Design Services

Air Filtration  
Fume Extraction



# CONTENTS

-  **Dust Collectors**  
3-7
-  **Sandblasters**  
8-9
-  **Enclosed Dust Collection Accessories**  
10
-  **HEPA Air Cleaners**  
11
-  **Filters**  
12-13
-  **Other Dust Collection Accessories**  
14-19
-  **Switches and Remotes**  
20
-  **Sandblaster Tips and Media**  
21
-  **Design Center**  
22

# VANGUARD IX

Part Number 10310

Dust collector designed for one workstation.

## Features

- Powerful motor for optimal suction
- Easy filter bag replacement
- Quiet operation

**For materials:** acrylic, gypsum, die-stone, alloy, quartz, ceramics (not intended for use with zirconia or sandblasters)

## Options

Pre-filter cyclone accumulator

Remote ON/OFF switch with 6-foot cord (add-on Part Number VMC-A450)

Internal HEPA filter (add-on Part Number 97016)

Internal odor filter (add-on Part Number 96013)



## Specifications

10.5 in. x 14 in. x 14.5 in.

Weight: 35 lbs.

# VANGUARD GOLD 2X

Part Number 10320

Dust collector designed for 1–2 workstations.

## Features

- High-performance motor for 1-2 workstations
- Adjustable speed
- Easy filter bag replacement
- Quiet operation

**For materials:** acrylic, gypsum, die-stone, alloy, quartz, ceramics (not intended for use with zirconia or sandblasters)

## Options

Pre-filter cyclone accumulator

Two workstation setup

Remote ON/OFF switch with 6-foot cord (add-on Part Number VMC-A450)

Internal HEPA filter (add-on Part Number 97016)

Internal odor filter (add-on Part Number 96013)



## Specifications

10.5 in. x 14 in. x 14.5 in.

Weight: 38 lbs.

# VANGUARD PLATINUM 2X

Part Number 10330

Dust collector for 1–2 workstations with advanced features.

## Features

- Autopilot syncing with micromotor for automatic ON/OFF of dust collector (air handpiece option available)
- High-performance motor for 1-2 workstations
- Adjustable speed
- Filter maintenance indicator light
- Easy filter bag replacement
- Internal post filter
- Quiet operation

**For materials:** acrylic, gypsum, die-stone, alloy, quartz, ceramics (not intended for use with zirconia or sandblasters)

## Options

Pre-filter cyclone accumulator

Two workstation setup

Remote ON/OFF switch with 6-foot cord (add-on Part Number VMC-A450)

Internal HEPA filter (add-on Part Number 97016)

Internal odor filter (add-on Part Number 96013)



## Specifications

10.5 in. x 14 in. x 14.5 in.

Weight: 38 lbs.

# STONEVAC II/STONEVAC II+

Part Number 10201 / 10202

High-volume dust collector designed for one to two workstations.

## Features

- Powerful, long-lasting turbine motor
- HEPA filtration
- Easy access door
- Push-button filter cleaning
- Autopilot sync with handpiece or small lathe (StoneVac II+ only)

## Maintenance

- Replaceable HEPA filter cartridge (Part Number 97001)
- Dust Bin Bags (Part Number 97002)

**For materials:** acrylic, gypsum, die-stone, alloy, quartz, ceramics, zirconia, sandblaster abrasive, and other dry lab materials.

## Options

Pre-filter cyclone accumulator

Two workstation setup

Remote ON/OFF/CLEAN switch with 6-foot cord (add-on Part Number 10203)



## Specifications

10 in. x 15 in. x 24.5 in.  
Weight: 55 lbs.

# STONEVAC BRUSHLESS SC

Part Number 10240

High-volume heavy dust collector for one to four workstations.

## Features

- Powerful, long-lasting brushless motor for extensive use
- Digital speed control for varied applications
- Automatic self-cleaning filter shaker motor (activates every four hours of dust collector operation)
- HEPA filtration
- Easy access door

## Maintenance

- Replaceable HEPA filter cartridge (Part Number 97001)
- Dust Bin Bags (Part Number 97002)

**For materials:** acrylic, gypsum, die-stone, alloy, quartz, ceramics, zirconia, sandblaster abrasive, and other dry lab materials.

## Options

Pre-filter cyclone accumulator

Two workstation setup

(Contact Vaniman regarding setup for 2+ stations)

Remote ON/OFF switch with 6-foot cord (add-on Part Number VMC-A450)



## Specifications

10 in. x 15 in. x 24.5 in.  
Weight: 55 lbs.

# STONEVAC MILL SYNC

Part Number 11060

CAD/CAM dust collector for one or two dental mills.

## Features

- CAMLink Technology for automatic CAD/CAM operation
- Powerful, long-lasting brushless motor for extensive use
- Digital speed control for varied applications
- Automatic self-cleaning filter shaker motor (activates every four hours of dust collector operation)
- Accumulator removes 95% of zirconia dust and other particulates prior to reaching filter
- HEPA filtration
- Easy access door
- Push-button filter cleaning

## Maintenance

- Replaceable HEPA filter cartridge (Part Number 97001)
- Dust Bin Bags (Part Number 97002)

**For materials:** acrylic, gypsum, die-stone, alloy, quartz, ceramics, zirconia, sandblaster abrasive, and other dry lab materials.

## Options

Specify mill brand and model  
(Contact Vaniman to inquire about supported models)



## Specifications

10 in. x 15 in. x 24.5 in.  
Weight: 55 lbs.

# STONEVAC AM

Part Number 11051

Class II, Division 2 vacuum for powder-based 3D printers.

## Features

- Syncs automatically with 3D printer
- Powerful, long-lasting brushless motor for extensive use
- Digital speed control for varied applications
- Automatic self-cleaning filter shaker motor (activates every four hours of dust collector operation)
- ESD-resistant pre-filter cyclone Accumulator reclaims 95% or better printing powder
- HEPA filtration
- Easy access door
- Push-button filter cleaning

## Maintenance

- Replaceable HEPA filter cartridge (Part Number 97001)
- Dust Bin Bags (Part Number 97002)

**For materials:** all dry 3D printing powder and lab materials.

## Options

Specify 3D printer brand and model  
(Contact Vaniman to inquire about supported models)



## Specifications

10 in. x 15 in. x 24.5 in.  
Weight: 55 lbs.

# SANDVAC

Part Number 10211

Compact single station dust collector designed for sandblaster units.

## Features

- Powerful long-life bypass motor designed for sandblaster units specifically
- Remote foot pedal ON/OFF included
- Pre-filter cyclone accumulator included to capture media, extending the life of the filter
- Power outlet to activate sandblaster LED light

## Maintenance

- Replaceable Filter Bags (Part Number VMC-A400-5)

**For materials:** acrylic, gypsum, die-stone, alloy, quartz, ceramics, zirconia, sandblaster abrasive, and other dry lab materials.



## Specifications

14.25 in. x 10.75 in. x 13.5 in.  
Weight: 43 lbs.

# DENTAL DRAWER S

Part Number 10451

A compact dust collector that hides away in a drawer.

## Features

- High-performance motor
- Pop-up debris shield
- Standard drawer rail (attached)
- Intuitive front control panel
- Self-contained suction – no additional plumbing required

## Maintenance

- Replaceable filter bags (Part Number 97089)

**For materials:** acrylic, gypsum, die-stone, alloy, quartz, ceramics, zirconia, sandblaster abrasive, and other dry lab materials.

## Options

Universal Mount (Part Number 96116) for flat surface mounting – specify white, gray, or wood grain front panel.



## Specifications

22 in. x 14.5 in. x 6 in.  
Weight: 10 lbs.

# V6 SE

Part Number 10281

Powerful dust collector for up to 6 workstations or up to 4 dental mills simultaneously.

## Features

- Smart suction power automatically adjusts motor speed depending on which stations or mills are in use at one time
- CAMLink Technology for seamless & reliable CAD/CAM operation
- HEPA Filtration
- Push-button "Air Pulse" filter maintenance system
- Large dust collection tray
- Inlet plate for 2.5 in., 3 in., or 4 in. plumbing sizes available

## Maintenance

- Replaceable HEPA cartridge (Part Number 96017)
- Replaceable cooling air filter (Part Number 2511)

**For materials:** acrylic, gypsum, die-stone, alloy, quartz, ceramics, zirconia, sandblaster abrasive, and other dry lab materials.

## Options

Free service: **Design Center**

For optimal suction systems

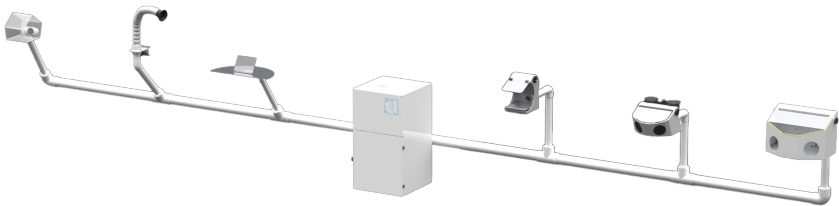
CAD renderings and instructions for entire lab layout

Endless remote/valve combinations available

Contact Vaniman for suggested plumbing



**Specifications**  
21 in. x 20 in. x 36 in.  
Weight: 136 lbs.



USE CAMERA



FILTER  
REPLACEMENT  
INFORMATION

# SANDSTORM PROFESSIONAL

Part Number 80401

Sandblaster/dust collector system for light use.

## Features

- Built-in dust collector (no external unit needed)
- Removable catch tray
- 1000 mL media tank (25-50 µm, 50-100 µm or 110-250 µm range)
- 1 pen-nozzle handpiece with precision tip
- Durable, blast-proof cabinet
- Bright internal LED lighting

## Maintenance

- Filter replacement (Part Number 2511)
- Microabrasive blasting media refill
- Tip replacements



## Specifications

15 in. x 14.5 in. x 12 in.  
Weight: 20 lbs.

# SANDSTORM 2

Part Number 80301

Compact sandblaster for moderate to heavy use.

## Features

- 2 selectable 1000 mL media tanks (25-50 µm, 50-100 µm or 110-250 µm range)
- 2 pen-nozzle handpieces with precision tips
- Durable, blast-proof cabinet
- Bright internal LED lighting

## Maintenance

- Microabrasive blasting media refill
- Tip replacements



## Specifications

16.5 in. x 16.5 in. x 10.5 in.  
Weight: 21 lbs.

External dust collector required; recommended unit: Vaniman SandVac (unit Part Number 10211)

# SANDSTORM SANDSHELL XL

Part Number 80280

Siphon blaster for walnut shell blasting.

## Features

- Pitsol-grip blasting gun
- Media recirculates from reservoir
- Heavy duty flexible gloves
- Indestructible resin cabinet
- Bright internal LED lighting

## Maintenance

- Microabrasive blasting media refill
- Replacement gun assembly (Part Number 98103)
- Replacement gloves (Part Number 97944)



## Specifications

23 in. x 22 in. x 19 in.  
Weight: 30 lbs.

External dust collector required; recommended unit: SandVac (unit Part Number 10211) or Vanguard series





## SANDSTORM MOBILE

Part Number 80140

Portable sandblaster for light use.

### Features

- 1000 mL media tank (25–50  $\mu\text{m}$ , 50–100  $\mu\text{m}$  or 110–250  $\mu\text{m}$  range)
- Pen-nozzle handpiece with precision tip

### Options

Instant Off (I/O) upgrade (unit Part Number 80141)

### Specifications

8 in. x 6 in. x 10.5 in.  
Weight: 10 lbs.



## SANDSTORM EDGE

Part Number 80410

Compact sandblaster for moderate use.

### Features

- 2 selectable 1000 mL media tanks (25–50  $\mu\text{m}$ , 50–100  $\mu\text{m}$  or 110–250  $\mu\text{m}$  range)
- 2 pen-nozzle handpieces with precision tips
- Durable, blast-proof cabinet
- Bright internal LED lighting

### Specifications

14.75 in. x 14.5 in. x 10 in.  
Weight: 13 lbs.

External dust collector required; recommended unit: Vaniman SandVac (unit Part Number 10211)



## SANDSTORM PRESTIGE

Part Number 80150

Large sandblaster for high volume labs.

### Features

- 3 selectable 1000 mL media tanks (25–50  $\mu\text{m}$ , 50–100  $\mu\text{m}$  or 110–250  $\mu\text{m}$  range)
- 3 pen-nozzle handpieces with precision tips
- Large steel cabinet
- Bright internal LED lighting

### Options

Instant Off (I/O) upgrade (unit Part Number 80170)

### Specifications

18 in. x 22 in. x 15 in.  
Weight: 27 lbs.

External dust collector required; recommended unit: Vaniman SandVac (unit Part Number 10211)



## SANDSTORM XL

Part Number VMC-X11L

Large work area heavy use sandblaster.

### Features

- 2 selectable 1000 mL media tanks (25–50  $\mu\text{m}$ , 50–100  $\mu\text{m}$  or 110–250  $\mu\text{m}$  range)
- 2 pen-nozzle handpieces with precision tips
- Extra-large blast-proof cabinet
- Bright internal LED lighting

### Specifications

23 in. x 22 in. x 19 in.  
Weight: 30 lbs.

External dust collector required; recommended unit: Vaniman SandVac (unit Part Number 10211)

# CUT & CLEAN POST-PROCESSING CABINET

Part Number 80074

Dust cabinet solution for post processing of CAD/CAM dental mill pucks or other applications.

## Features

- Handheld air nozzle with left or right mounting option
- Bright internal LED lighting



## Specifications

12.5 in. x 16.5 in. x 10.5 in.

Weight: 20 lbs.

External dust collector recommended

# CUT & CLEAN XL POST-PROCESSING CABINET

Part Number 80075

Powerful dust cabinet solution for post processing of CAD/CAM dental mill pucks or other applications.

## Features

- Handheld air nozzle with left or right mounting option
- Durable steel casing
- Bright internal LED lighting
- Rubber grommets for handpiece access



## Specifications

18 in. x 22 in. x 15 in.

Weight: 25 lbs.

External dust collector recommended

# VANiCAB ETCHING CABINET

Part Number 80403

Durable etching cabinet with built-in dust collection.

## Features

- Rugged, durable design
- Removable debris tray for media capture
- Self contained replaceable filter system
- Bright internal LED lighting



## Specifications

15 in. x 14.5 in. x 12 in.

Weight: 18 lbs.

# VANGUARD MOBILE 2.0

Part Number 10337

HEPA filter extraoral suction device for dental clinics.

## Features

- Compact chairside suction unit with lab grade HEPA filtration
- Durable casters for portability
- Advanced sound-dampening design
- Remote foot pedal ON/OFF included
- Reduces aerosols generated during dental procedure by up to 84% when used with HVE

## Maintenance

- Stage 1 heavy particulate pre-filter (Part Number 96098)
- Stage 2 HEPA filter (Part Number 96097)
- See Vaniman website for disinfecting guidance



## Specifications

Base: 10 in. x 14 in. x 21.5 in.  
Hose length (assembled): 56 in.  
Hose diameter: 3 in.  
Weight: 39 lbs.

# PURE BREEZE HEPA AIR PURIFIER

Part Number 10360

HEPA filter air purifier for aerosol safety and infection control.

## Features

- Lab grade HEPA filtration
- Durable casters for portability
- Tested and proven to significantly reduce contaminant aerosols in indoor dental spaces

## Maintenance

- Stage 1 heavy particulate pre-filter (Part Number 97021)
- Stage 2 secondary filter (Part Number 97022)
- Stage 3 charcoal odor filter (Part Number 97023)
- Stage 4 HEPA filter (Part Number 97024)

## Options

Glass table top (add-on Part Number 97996)

Wall or ceiling-mounted Fume Hood version (unit Part Number 10370) or benchtop shield Fume Hood version (unit Part Number 10373) available; see website for details.



## Specifications

19 in. x 15.5 in. x 29.5 in.  
Weight: 67 lbs.

# VANGUARD MOBILE FILTERS

Part Numbers 96097, 96097

Two stages of filtration, including a HEPA filter.

## Filters

- Stage 1 heavy particulate pre-filter (Part Number 96098)
- Stage 2 HEPA filter (Part Number 96097)

## Filter Kit (Part Number 97045)

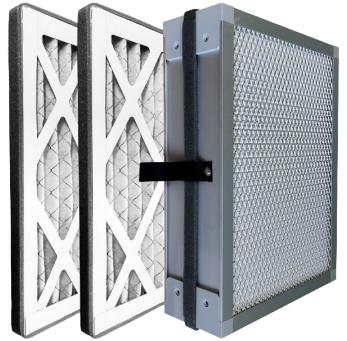
- Includes 2 heavy particulate filters and 1 HEPA filter

## HEPA Filter Specifications

10 in. x 13.75 in. x 3.75 in.

Internal; designed only for Vanguard Mobile 2.0 (Part Number 10337)

Certified HEPA — captures at least 99.97% of all particulates down to 0.3  $\mu\text{m}$



# PURE BREEZE FILTERS

Part Numbers 97021-97024

Four stages of filtration, including a HEPA filter.

## Filters

- Stage 1 heavy particulate pre-filter (Part Number 97021)
- Stage 2 secondary filter (Part Number 97022)
- Stage 3 charcoal odor filter (Part Number 97023)
- Stage 4 HEPA filter (Part Number 97024)

## HEPA Filter Specifications

17.75 in. x 14.75 in. x 4 in.

Internal; designed for Pure Breeze HEPA Air Purifier (Part Number 10360) or Pure Breeze HEPA Fume Hood (Part Number 10370)

Certified HEPA — captures at least 99.97% of all particulates down to 0.3  $\mu\text{m}$



USE CAMERA



FILTER  
REPLACEMENT  
INFORMATION

# STONEVAC HEPA FILTER

Part Number 97001

HEPA filter cartridge for StoneVac series dust collectors.

## Filter

- Heavy duty HEPA filter material
- Cylindrical shape
- Designed to work with shaker motor

## Options

Separate dust bin bags for easy dust disposal (Part Number 97002)



## HEPA Filter Specifications

Internal; designed only for StoneVac series dust collectors

Diameter: 7 in.

Height: 7.75 in.

Certified HEPA – captures at least 99.97% of all particulates down to 0.3  $\mu\text{m}$

# V6 HEPA FILTER

Part Number 96017

HEPA filter cartridge for V6 dust collector.

## Filter

- Heavy duty HEPA filter material
- Cylindrical shape
- Designed to work with Air Pulse filter maintenance system

## HEPA Filter Specifications

Internal; designed only for V6 dust collectors

Diameter: 10.25 in.

Height: 7.25 in.

Certified HEPA – captures at least 99.97% of all particulates down to 0.3  $\mu\text{m}$



# FILTER BAGS

3-pack: Part Number VMC-A400-3

5-pack: Part Number VMC-A400-5

Replacement filter bags for various dust collectors.

Designed for use in Vanguard IX, Vanguard Gold 2X, Vanguard Platinum 2X, and SandVac

## Filter Bag Specifications

Internal; designed to work with a variety of Vaniman dust collectors

Filters 97% of particulates down to 1  $\mu\text{m}$

See website for installation instructions and other information





Height: 13.25 in.



Height: 24 in.

## SMALL ACCUMULATOR

Part Number VMC-A100

Small pre-filter cyclone accumulator for dust collectors.

### Features

- Up to 95% cyclonic separation rate of particles down to 0.3  $\mu\text{m}$
- Small removable capture bucket – 1/8 gal. (1/2 qt.)
- Highly durable molded plastic
- Extends dust collector filter efficiency and motor life

## LARGE ACCUMULATOR

Part Number VMC-A300

Large pre-filter cyclone accumulator for dust collectors.

### Features

- Up to 95% cyclonic separation rate of particles down to 0.3  $\mu\text{m}$
- Large removable capture bucket – 1/2 gal. (2 qt.)
- Highly durable molded plastic
- Extends dust collector filter efficiency and motor life



## SPLASH HOOD

Part Number 96045

Dust collector accessory work area designed for a 6" wheel.

### Features

- Adjustable clear shield
- Removable debris tray
- Bright LED lighting for work area



## SPLASHVAC

Part Number 96046

Self-contained dust collector work area designed for a 6" wheel.

### Features

- Built-in vacuum fan and filter
- Adjustable clear shield
- Removable debris tray
- Bright LED lighting for work area

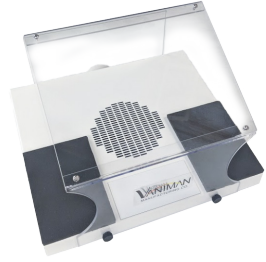
# DOWNDRAFT

Part Number 96044

Benchtop semi-enclosed dust collection station for hand pieces.

## Features

- Shielded work area
- Padded wrist rests
- Adjustable vent areas
- Compatible with most Vaniman dust collectors



# DOWNDRAFT PRO

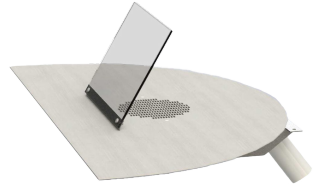
With Corner: Part Number 96060

With Flat Edge: Part Number 96061

Dust collector station designed for one workstation.

## Features

- High quality stainless steel panel
- Removable debris shield
- Catch-pan underneath
- Compatible with most Vaniman dust collectors



# DOWNDRAFT DRAWER

Part Number 96053

Dust collection station designed to fit into a standard drawer space.

## Features

- Pop-up protective shield
- Telescoping rear plumbing
- Integrated remote switch for dust collector activation
- Compatible with most Vaniman dust collectors



## JET PORT

Part Number VMC-A440

Workstation suction port for dust collection.

### Features

- High quality grained wood
- Wire mesh capture screen



## JET PORT WITH COMFORT ZONE

For 1.5 in. hose: Part Number VMC-A441

For 2.5 in. or 3 in. hose: Part Number 10507

Workstation suction port for dust collection with luxurious wrist padding.

### Features

- Padded wrist rests
- High quality grained wood
- Wire mesh capture screen



## MOBILE JET PORT

Part Number VMC-A442

Removable workstation suction port.

### Features

- High quality grained wood
- Wire mesh capture screen





# POLY GUARD II SHIELD

Part Number VMC-A398

Polygonal 360-degree enclosed tabletop work area.

## Features

- Durable polycarbonate
- Wire mesh capture screen
- Connects to 2.5 in. or 1.5 in. suction hose



# FISH MOUTH PLUS W/FLEXSHIELD

With shield: Part Number 10503

Without shield: Part Number VMC-A395

Movable open steel suction port with flexible neck holding a protective shield.

## Features

- High quality durable steel mouth
- Flexible neck
- Adjustable clear shield
- Wire mesh capture screen
- Connects to 2.5 in. or 1.5 in. suction hose



# FLEXSHIELD

Part Number VMC-A391

Flexible neck holding a protective shield for a variety of workstation equipment, walls, or cabinetry.

## Features

- Universal mounting: adhesive, magnetic, or fixed
- Flexible neck
- Adjustable clear shield



# FLEX HOSE KIT

Part Number 96026

Flexible suction hose and port for benchtop or benchside installation.

## Features

- 3 ft. flexible linked suction hose
- Wide-mouth collection opening
- Side mount or through-bench mounting options



# THE MUFFLER

Part Number 96028

Accessory to significantly dampen suction sound at dust collection points.

## Features

- Connects to 2.5" suction hoses, or to 1.5" suction hoses with reducer (Part Number VMC-1006A)
- 2 reducers included



# MILL CLEANING KIT FOR DUST COLLECTORS

Part Number 10511

Accessories for additional cleaning using a dust collector.

## Features

- Dust brush head tool
- Crevice/corner head tool
- 2 station selector valve T (to switch between regular function suction and cleaning extension hose)
- 10 ft. hose



# PNEUMATIC VALVE

Part Number 10518

Vaniman's plumbing solution for smart suction systems.

## Features

- Opens or shuts to close off plumbing channels to optimize suction around an entire work area or lab
- Manual or automated remote control (either with a Smart Switch or a Smart AutoPilot)
- Powered by compressed air (15 PSI max)

Contact Vaniman for plumbing configuration.



# SMART SWITCH

Part Number 96068

Manual control device for Pneumatic Valves.

## Features

- Toggles pneumatic operation of the valve to dust collection accessories
- Remotely starts/stops dust collector unit

Contact Vaniman for plumbing configuration.



# SMART AUTOPILOT FOR TWO MICROMOTORS

Part Number 96073

Advanced control box for Vaniman Smart System.

## Features

- Automatic dust collector ON/OFF while using hand pieces or lathes
- Opens/closes pneumatic valves (15-20 psi max) while using hand pieces
- Works on units 10A or less, or max current draw of 5A
- Built-in "Dust Delay Timer" allows dust collection after stopping

Contact Vaniman for plumbing configuration.



# SWITCHES AND REMOTES

| Name                                  | PN       | Description   |
|---------------------------------------|----------|---|
| Remote On/Off Switch                  | VMC-A450 | 6 ft. ON/OFF extension for dust collectors  |
| Dual Remote On/Off Switch             | VMC-A455 | Two-station ON/OFF extension for dust collectors  |
| Foot Remote Switch                    | VMC-A460 | Remote ON/OFF extension for dust collectors   |
| StoneVac On/Off Clean Remote          | 10203    | 6 ft. ON/OFF/CLEAN extension for StoneVac II and StoneVac II Plus   |
| Foot Pedal Remote                     | 1443     | Remote ON/OFF air foot pedal (bellows with tube) for SandVac or Vanguard Mobile 2.0                                       |
| Remote Combining Box                  | 96069    | Hub for multiple remote switches to operate a single dust collector   |
| Control Switch for Pneumatic Valve    | 10522    | Manual control switch for pneumatic tubes   |
| Smart Switch for Combining Box        | 96068B   | ON/OFF switch for dust collector connected through combining box  |
| Smart Switch                          | 96068    | ON/OFF remote switch for dust collectors that also opens/closes pneumatic valves  |
| AutoPilot for 2 Micromotors           | VMC-A600 | Enables dust collector activation by one or two micromotor handpieces or lathes (5A max each)                             |
| AutoPilot Deluxe for 2 Air Handpieces | VMC-A601 | Enables dust collector activation by one or two air driven handpieces (5A max each)                                       |
| Smart AutoPilot for 2 Micromotors     | 96073    | Enables dust collector activation and pneumatic valve control by one or two micromotor handpieces or lathes (5A max each) |
| Pneumatic Valve                       | 10518    | Valve that opens or closes via compressed air to optimize suction plumbing systems  |

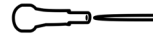
# DENTAL MILL REMOTES

| Name                                  | PN    | Description   |
|---------------------------------------|-------|---|
| Mill Remote - Lava 3-Prong            | 10514 | For Lava brand mills  |
| Mill Remote - Yenadent 9-Pin Female   | 10520 | For Yenadent brand mills  |
| Mill Remote - Zirkozahn 3-Prong       | 10523 | For Zirkozahn brand mills   |
| Mill Remote - Digital Dental          | 10525 | Dual connection for Digital Dental brand mills  |
| Mill Remote - Roland 1/8 in. Aux.     | 11054 | For Roland mills and engravers  |
| Mill Remote - 4-Pin Female            | 11063 | For A5, C5, C6, and other dental mills  |
| Mill Remote - ARUM 2-Pin              | 11065 | For ARUM 5X-300   |
| Mill Remote - Roland 1/8 in. Aux.     | 11072 | For Roland DWX-52DC/ DWX-52DCi / DWX-51D / DWX-50 / EGX-350   |
| Mill Remote - LaserDental 3-Pin       | 96054 | For LaserDental brand mills   |
| Mill Remote - XTCERA 4-Pin Female     | 96102 | For XTCERA X-Mill 500   |
| Mill Remote - 4-Pin                   | 96119 | For Wieland - Zenotec VHF Mills: Preciso M200 (Jensen) / MasterMill / BruxZir (Glidewell) / CAM 4-K4 / CAM 5-S1 / CAMV 5-S2 |
| Mill Remote - imes-icore 9-Pin Female | 96077 | For imes-icore dental mill  |
| Mill Remote - VHF K5 Impression 6-Pin | 96078 | For VHF K5 Impression dental mill   |

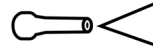
# SANDBLASTER NOZZLE TIPS

| Tip                             | PN    | Size                | Recommended media  |
|---------------------------------|-------|---------------------|--|
| Yellow (Small Tungsten Carbide) | 97905 | 0.026 in. (0.65 mm) | 25 µm Al <sub>2</sub> O <sub>3</sub>   |
| Blue (Medium Crystal)           | 97902 | 0.032 in. (0.8 mm)  | 25 µm Al <sub>2</sub> O <sub>3</sub> , 50 µm Al <sub>2</sub> O <sub>3</sub>  |
| Green (Medium Tungsten Carbide) | 97906 | 0.036 in. (0.91 mm) | 50 µm Al <sub>2</sub> O <sub>3</sub> , 50 µm Glass Bead, 50-100 µm NaHCO <sub>3</sub> , 100 µm Al <sub>2</sub> O <sub>3</sub>  |
| Black (Large Crystal)           | 97903 | 0.048 in. (1.2 mm)  | 50 µm Al <sub>2</sub> O <sub>3</sub> , 50 µm Glass Bead, 50-100 µm NaHCO <sub>3</sub> , 100 µm Al <sub>2</sub> O <sub>3</sub>  |
| Violet (Large Tungsten Carbide) | 97907 | 0.059 in. (1.5 mm)  | 50 µm Glass Bead, 50-100 µm NaHCO <sub>3</sub> , 100 µm Al <sub>2</sub> O <sub>3</sub> , 250 µm Al <sub>2</sub> O <sub>3</sub> |
| Red (Extra Large Crystal)       | 97904 | 0.065 in. (1.6 mm)  | 100 µm Al <sub>2</sub> O <sub>3</sub> , 250 µm Al <sub>2</sub> O <sub>3</sub>  |

Tungsten Carbide tips offer linear, pinpoint-precision media delivery.



Sapphire crystal tips offer conical, evenly distributed media delivery.



# SANDBLASTING MEDIA

| Material   | PN               |         |            |
|--|------------------|---------|------------|
|  | 1 Tank (~4 lbs.) | 15 lbs. | 50-55 lbs. |
| 25 µm "VanOxide" Aluminum Oxide (Al <sub>2</sub> O <sub>3</sub> )  | ▲ 97935          | 97921   | 98201      |
| 50 µm "VanOxide" Aluminum Oxide (Al <sub>2</sub> O <sub>3</sub> )  | ▲ 97936          | 97922   | 97927      |
| 100 µm "VanOxide" Aluminum Oxide (Al <sub>2</sub> O <sub>3</sub> ) | ▲ 97937          | 97923   | 98202      |
| 250 µm "VanOxide" Aluminum Oxide (Al <sub>2</sub> O <sub>3</sub> ) | ▲ 97938          | 97924   | 98203      |
| 50 µm "VanGlass" Glass Bead  | ● 97939          | 97925   | 98204      |
| 50-100 µm Sodium Bicarbonate (NaHCO <sub>3</sub> )                 | ▲ 98200          | 97934   | 98206      |
| 50 µm Walnut Shell   | ▲ -              | 97933   | -          |
| 100 µm Walnut Shell  | ▲ -              | 97932   | 98207      |
| 250 µm Walnut Shell  | ▲ -              | -       | 97931      |

▲ Grain shape: angular

● Grain shape: spherical

# DESIGN CENTER

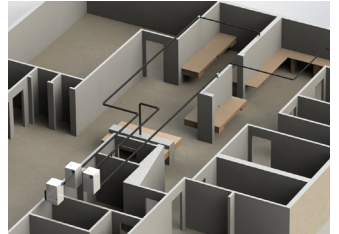
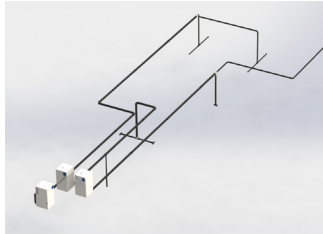
The Vaniman Design Center is a FREE professional design service for optimizing suction and plumbing efficiency for multiple workstations with dust collection.

Don't let indecision keep your dream lab out of reach — let Vaniman figure out the best solution for you!

First, you provide us with your physical space layout and your ideas for what needs improvement, expansion, or a brand-new setup entirely.

Then, we provide you with 3D CAD renderings of your lab or office setup that include plumbing and equipment, showing you the ideal way to maximize your suction at each station and keep your power bills as low as possible.

Our custom designed smart systems allow for unique workstation functionality, and we provide a specific list of the best setup to use so there's no guesswork.



Reach out to Vaniman by phone or email for your FREE 3D design.

1.800.VANIMAN  
sales@vaniman.com





[www.vaniman.com](http://www.vaniman.com)

or

follow us on social media.



## **VANIMAN MANUFACTURING CO.**

Family owned and operated since 1985.

Our products are assembled and built by hand in our Southern California facility. We test each unit prior to shipping.

Our mission is to solve problems by creating high quality products that are reliable and easy to maintain.

Our dental product lineup can be found in this catalog or online at:

[www.vaniman.com](http://www.vaniman.com)

[1.800.VANIMAN](tel:1800VANIMAN)  
[sales@vaniman.com](mailto:sales@vaniman.com)



COPYRIGHT © 2022 VANIMAN MANUFACTURING CO.