

INSTRUCTIONS

1. Remove the tubing from the bottom fitting of the sand tank. See Figure 3 for instructions on quick fittings.
2. Remove the handpiece assembly ⑦ (Fig. 2) from inside the cabinet by pulling the tubing through the rubber grommet.
3. Unscrew the nozzle cap ⑥ to remove the tip ⑤ and the O-ring ④. Using a pair of pliers, grasp the handpiece insert ③ and with a twisting motion pull the tubing through the handle ② while trying to not to damage the part with pliers. Pull the handpiece insert from the tubing by twisting and pulling.

NOTE: On some units, a steel barbed nozzle may be in the tubing - this should be removed from the tubing and discarded, it can no longer be used with the new long lasting polyurethane tubing. It may be necessary to moisten the tubing and/or soak the tubing in warm water to ease onto the barb at the bottom of the sand tank.

4. Using the new piece of tubing, push the tubing through the handle-using a twisting motion. When the tubing is through the handle, pull in out several inches and press the handpiece insert ③ all the way onto the end of the tubing, until the tubing is flush with the front of the insert.
5. Pull the tubing back into the handle until the collar on the handpiece insert is butted-up to the end of the handle. Pull the tubing through the rubber grommet, blow out tank bottom fitting and re-attach it to the sand tank assembly by pushing it into the quick-release fitting. Visually make sure the tube travels past the black seal looking through the transparent raised area (Fig. 1). Re-assemble the O-ring, tip and nozzle cap to the handle.

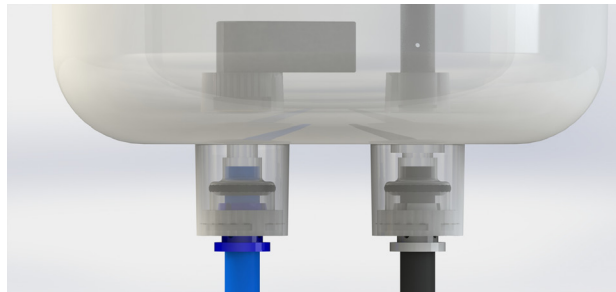


Figure 1

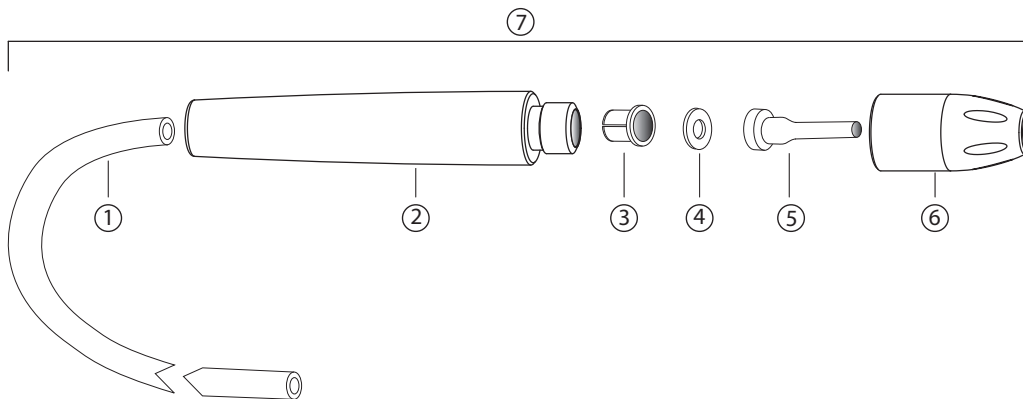


Figure 2

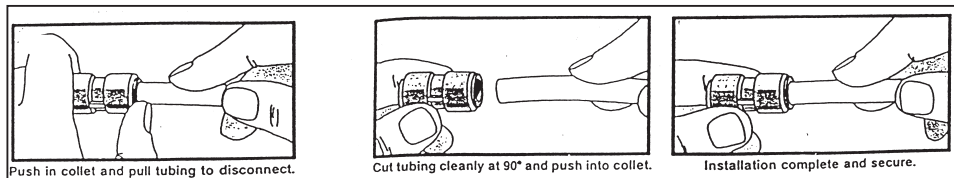


Figure 3

HANDPIECE PARTS

Number	Description	Part Number	Corresponding unit
1	Anti-Static Handpiece Tubing	97928 (2ft.) 97929 (3ft.) 97930 (4ft.) 2192 (by the foot)	SandStorm Edge, Professional, 2, Expert, & Problast 2 SandStorm XL & Problast SandStorm Prestige & Problast 3 -
2	Handle	2191	All Units
3	Handpiece Insert	2187	All Units
4	O-Ring	97909 (5-pack)	All Units
5	Tip (o-ring included)	See Below	All Units
6	Nozzle Cap	2177	All Units
7	2ft. Handpiece Assembly* 3ft. Handpiece Assembly* 4ft. Handpiece Assembly* 6ft. Handpiece Assembly*	97947 97949 97959 98109	SandStorm Edge, Professional, 2, Expert, & Problast 2 SandStorm XL & Problast SandStorm Prestige & Problast 3 SandStorm Mobile & Mobile Problast

*Does not include o-ring or tip

BLASTER TIPS

Tip Type	Part No.	Color	Nozzle Size	Recommended Vaniman Media	Recommended Tank Assembly	
					Part Number	Description
Crystal Tip (2 per pack)	97902	Blue	Medium 0.032" (0.8mm)	25µm Al2O3	97956	25µm
	97903	Black	Large 0.048" (1.2mm)	50µm Al2O3	97957	50-100µm
				50µm Glass Bead		
				100µm Al2O3		
	97904	Red	Extra Large 0.065" (1.6mm)	50µm Glass Bead	97958	110-250µm
				100µm Al2O3		
Tungsten Carbide Tip (1 per pack)	97905	Yellow	Small 0.026" (0.65mm)	25µm Al2O3	97956	25µm
	97906	Green	Medium 0.036" (0.91mm)	50µm Al2O3	97957	50-100µm
				50µm Glass Bead		
				100µm Al2O3		
	97907	Violet	Large 0.059" (1.5mm)	50µm Glass Bead	97958	110-250µm
				100µm Al2O3		
250µm Al2O3						

BLASTER MEDIA

Material	Size	Part Number			Applications
		55lbs.	15lbs.	One Tank	
Aluminum Oxide	25µm	98201	97921	97935	Fine surfacing of metal and other hard materials.
	50µm	97927	97922	97936	Deburring and deflashing of metals and other hard materials.
	100µm	98202	97923	97937	Aggressive removal of materials, semi-rough finished surface.
	250µm	98203	97924	97938	Bulk removal or surface cleaning of tough materials. Rough surface preparation.
Glass Bead	50µm	98204 (50 lbs)	97925	97939	Smoothing/polishing. Cleans and polishes without removing material.
Sodium Bicarbonate	50-100µm	98206 (50 lbs.)	97934	98200	Aggressive removal of materials, water soluble and does not embed into the material.
Walnut Shell	200 Grit	-	97933	-	Organic, used for cleaning purposes.
	40/100 Grit	98207 (50 lbs.)	97932	-	
	20/40 Grit	97931 (50 lbs.)	-	-	