

PLUMBING CONNECTION INSTRUCTIONS

To plumb your Vaniman StoneVac Mill Sync to an IMES CORiTEC 150i or CORiTEC 350i milling machine:

1. CORiTEC 150i:

- A. Included with your StoneVac Mill Sync unit is a 1.25" gray hose end adapter (Fig. 1) and a 2.5" by 6' white hose (Fig. 2).

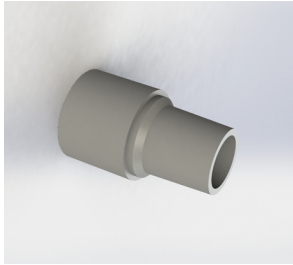


Fig. 1

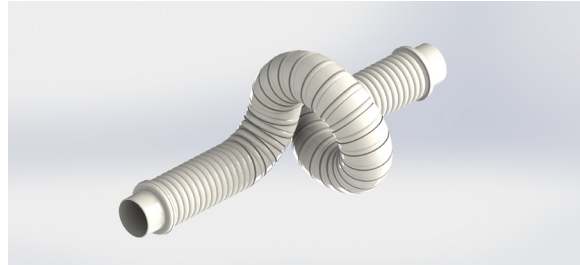


Fig. 2

- B. Insert the larger diameter end of the 1.25" hose end adapter into one ends of the 2.5" hose (Fig. 3).

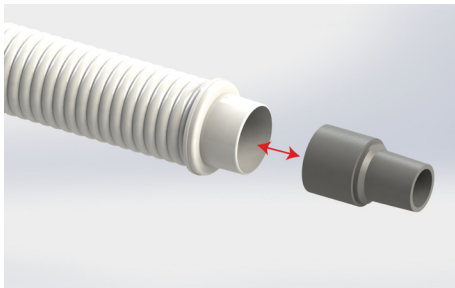


Fig. 3

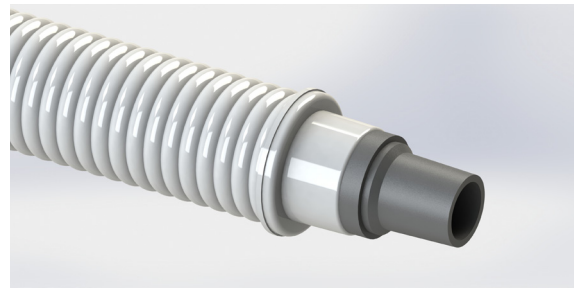


Fig. 4

- C. Slide the hose end into the dust collection plumbing port on your CORiTEC 150i mill machine until the hose is snug and secure.
- D. Slip the other end of the 2.5" white hose into the inlet port on the back of your StoneVac Mill Sync (Fig. 5).

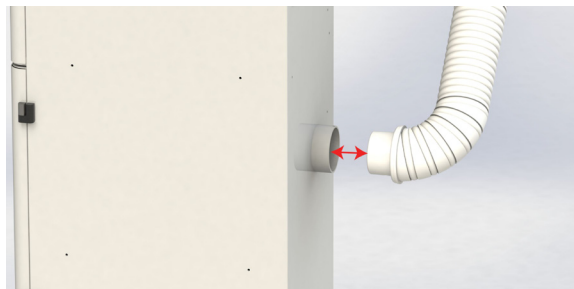


Fig. 5

2. CORiTEC 350i:

- A. Also included with your StoneVac Mill Sync kit is a 90-degree PVC elbow with a white bushing inside one of its ends (Fig. 6).

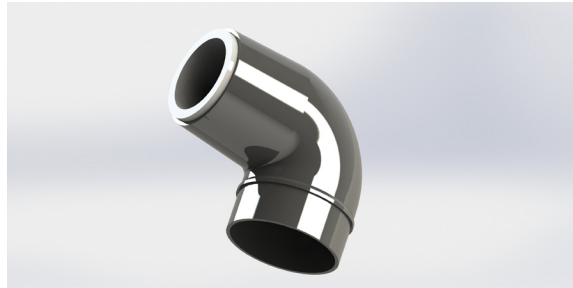


Fig. 6

- B. Connect the 2.5" white hose the end of the elbow without the bushing in it (Fig. 7).

NOTE: Do not use the 1.25" gray hose end adapter if connecting to a CORiTEC 350i mill machine.

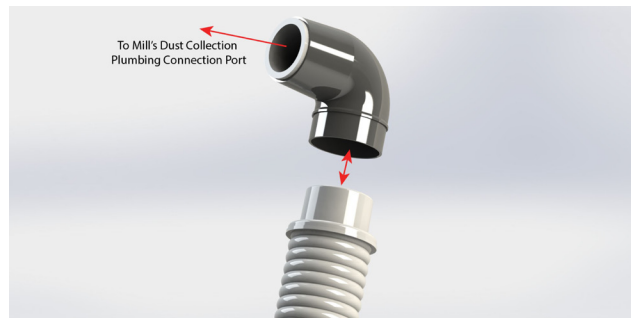


Fig. 7

- C. Slip the bushing end of the elbow onto the plumbing port of your CORiTEC 350i mill machine.
- D. Slip the other end of the 2.5" white hose into the inlet port on the back of your StoneVac Mill Sync (Fig. 8)

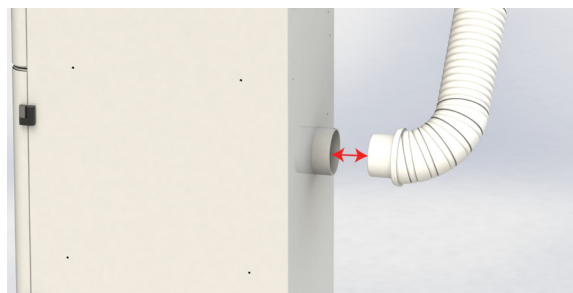


Fig. 8

ELECTRICAL CONNECTION INSTRUCTIONS

3. An IMES mill remote was also included in your StoneVac Mill Sync Kit (Fig. 9). The mill remote should come with two different types of cables (Fig. 10 & 11).



Fig. 9



Fig. 10



Fig. 11

4. Plug one end of the headphone cable shown in Fig. 10 into the mill remote's connector shown in Fig. 12. Plug the other end of the cable into the port on the back of the StoneVac Mill Sync labeled "Remote Port" (Fig. 13).

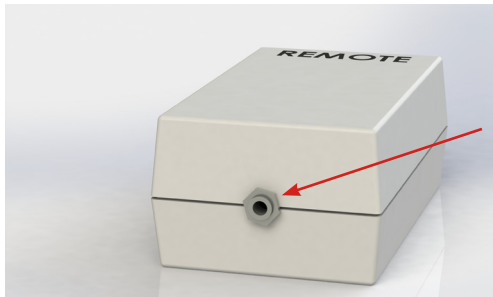


Fig. 12

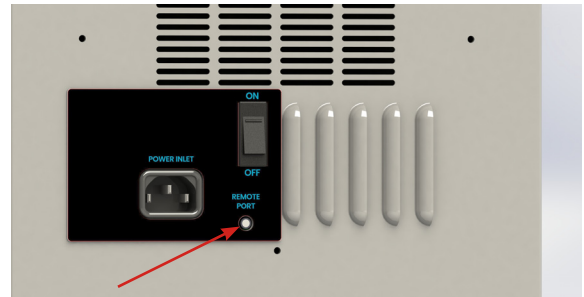


Fig. 13

5. Plug the cable shown in Fig. 11 above into the mill remote's connector shown in Fig. 14. Plug the other end in to the proper connector on the back of the IMES mill.



Fig. 14

6. Turn the StoneVac Mill Sync on by flipping the switch on the rear of the unit to the "ON" position, then press the "MANUAL/REMOTE" button on the front panel (Fig. 15). Now your StoneVac Mill Sync is properly connected and ready to run along with your IMES milling machine.

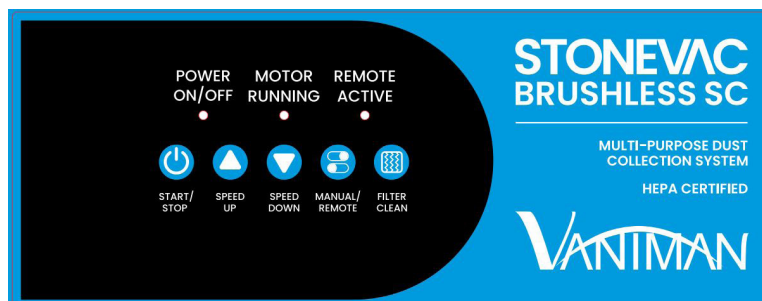


Fig. 15