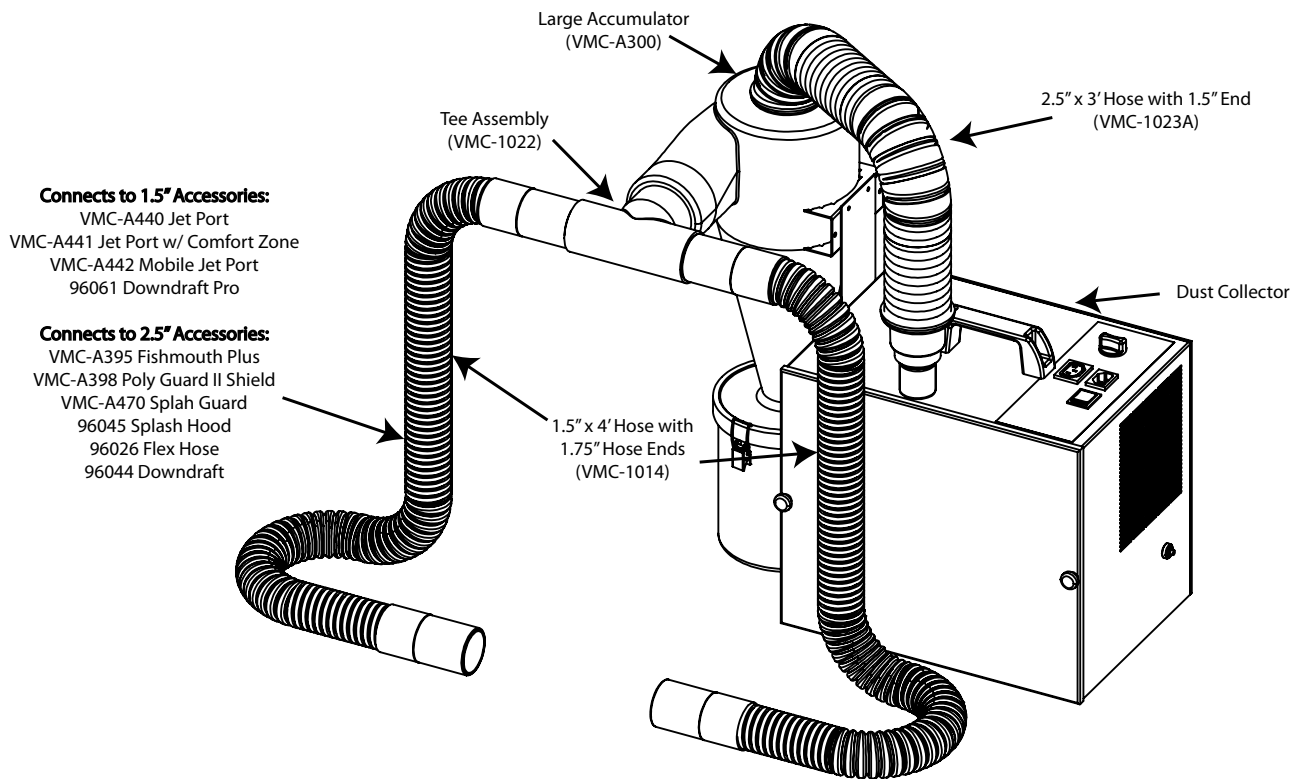


2 STATION DUST COLLECTOR W/ 1.5" HOSES & ACCUMULATOR



PACKING LIST

- 1 - Dust Collector
- 1 - Pre-Filter Accumulator
- 1 - Power Cord
- 1 - Tee Assembly for Accumulator
- 1 - 2.5" x 3' Hose with 1.5" Hose End
- 2 - 1.5" x 4' Hoses with 1.75" Hose Ends

IMPORTANT SERVICE INFORMATION:
SAVE SHIPPING BOX AND FOAM FOR FUTURE SERVICE. SHIPPING WITHOUT PROPER FOAM MAY CAUSE DAMAGE TO UNIT

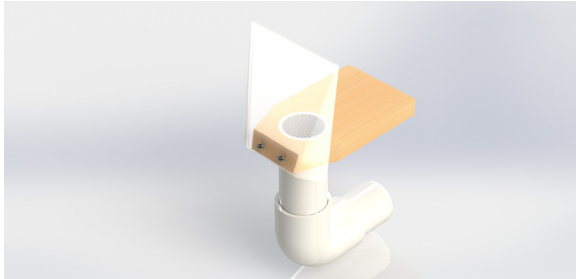
ASSEMBLY INSTRUCTIONS

1. Mount the Accumulator according to the mounting instructions included with it, or assemble the bracket to the dust collector as illustrated. Remove the two screws provided on the side of the unit and use them to fasten the bracket to the vacuum.
2. Connect the 1.5" Hose End side of the 2.5" x 3' Hose to the Dust Collector inlet tube, and the opposite end into the top of the Accumulator by firmly pressing the hose end into the Accumulator.
3. Connect the Tee Assembly to the inlet arm of the accumulator by firmly pressing the nipple into the Accumulator. Once the Tee Assembly is installed, connect one of the 1.5" x 4' hoses to one side of the Tee Assembly, and connect the other 1.5" x 4' hose to the other side of the Tee Assembly.
4. Route the 1.5" x 4' hoses to their respective station or collection accessories. The hose may be shortened to minimize suction loss by cutting the plastic hose with a sharp knife. The hose end threads off with a left-hand thread. Thread the hose ends back on once the hose has been shortened to desired length.

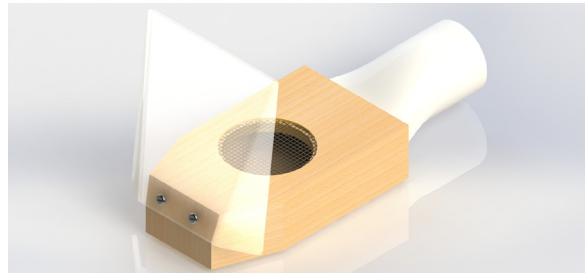
**2 STATION DUST COLLECTOR
W/ 1.5" HOSES & ACCUMULATOR**

DUST COLLECTOR ACCESSORIES

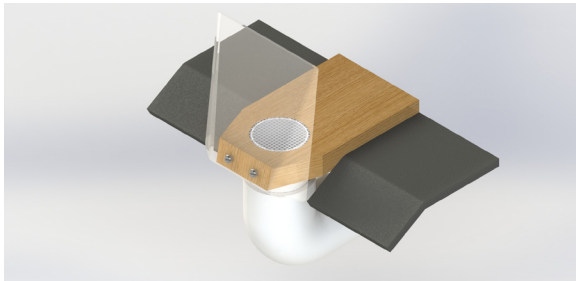
Jet Port - VMC-A440



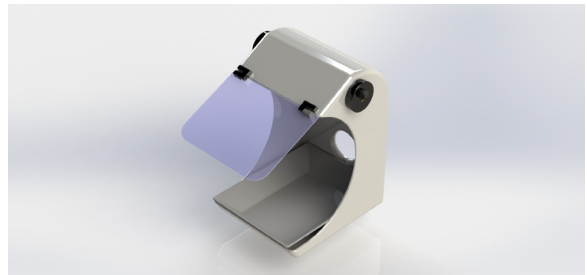
Mobile Jet Port - VMC-A442



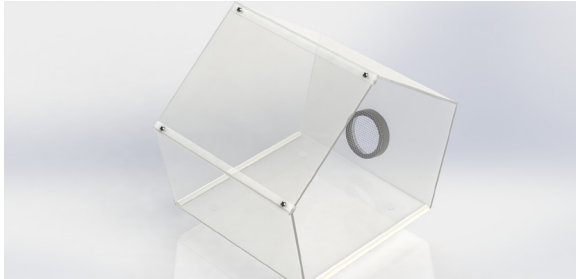
Jet Port w/ Comfort Zone - VMC-A441



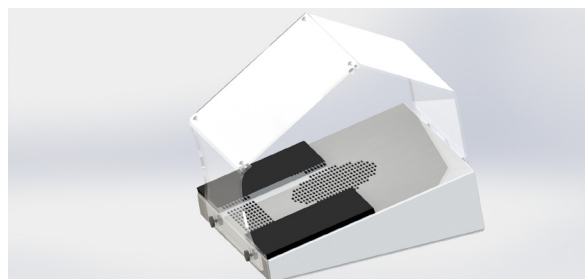
Splash Hood - 96045



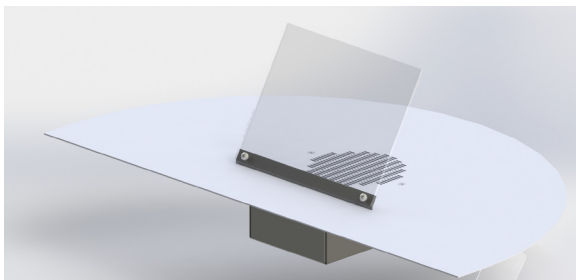
Polyguard II - VMC-A398



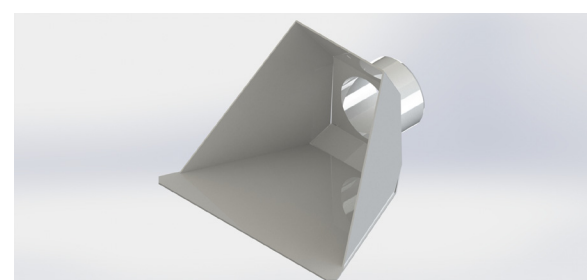
Downdraft - 96044



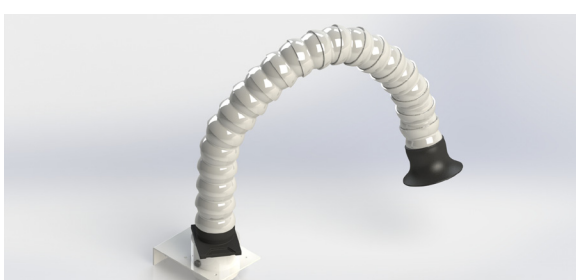
Downdraft Pro - 96060



Fishmouth - VMC-A395



Flexhose Kit - 96026



Cut & Clean - 80074

