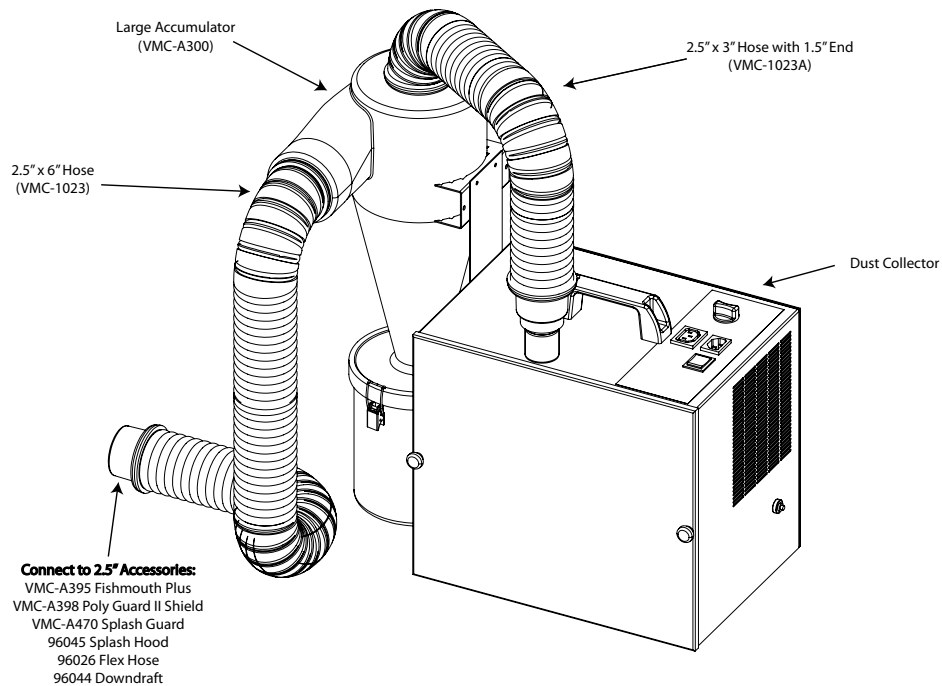


# 1 STATION DUST COLLECTOR W/ 2.5" HOSE & ACCUMULATOR



**Or Adapt to 1.5" Accessories w/ Adapter VMC-1036:**  
 VMC-A440 Jet Port  
 VMC-A441 Jet Port w/ Comfort Zone  
 VMC-A442 Mobile Jet Port  
 96061 Downdraft Pro

## PACKING LIST

- 1 - Dust Collector
- 1 - Pre-Filter Accumulator
- 1 - Power Cord
- 1 - 2.5" x 3' Hose
- 1 - 2.5" x 6' Hose
- 1 - Adapter for 1.5" Accessory

**IMPORTANT SERVICE INFORMATION:**  
 SAVE SHIPPING BOX AND FOAM FOR FUTURE SERVICE. SHIPPING WITHOUT PROPER FOAM MAY CAUSE DAMAGE TO UNIT

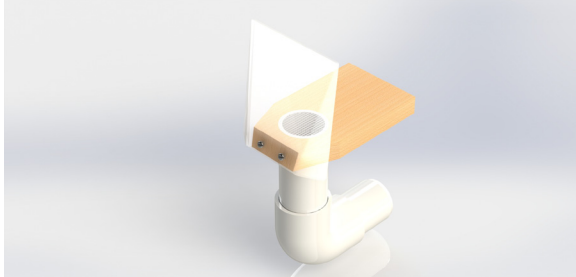
## ASSEMBLY INSTRUCTIONS

1. Mount the Accumulator according to the mounting instructions included with it, or assemble the bracket to the dust collector as illustrated. Remove the two screws provided on the side of the unit and use them to fasten the bracket to the vacuum.
2. Assemble the hose with the 1.5" hose end to the vacuum unit and the other end to the top of the Accumulator by firmly pushing the hose end into the adapter.
3. Connect the other hose from the side of the Accumulator to your station or accessory.

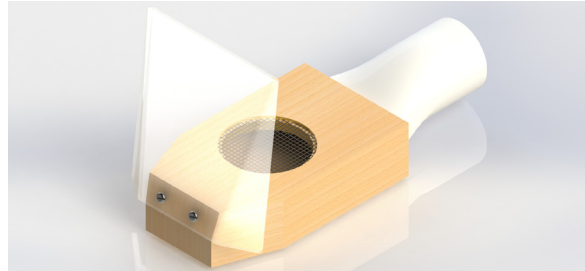
**1 STATION DUST COLLECTOR  
W/ 2.5" HOSE & ACCUMULATOR**

**DUST COLLECTOR ACCESSORIES**

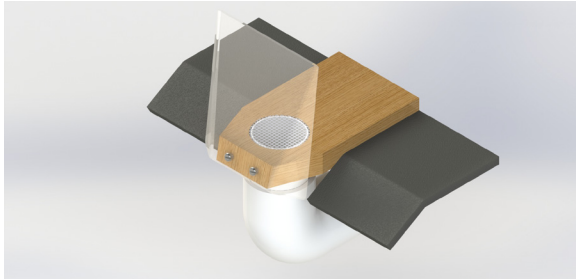
**Jet Port - VMC-A440**



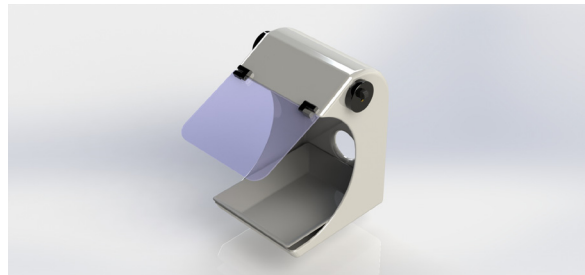
**Mobile Jet Port - VMC-A442**



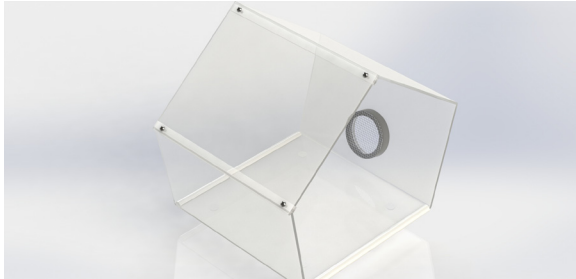
**Jet Port w/ Comfort Zone - VMC-A441**



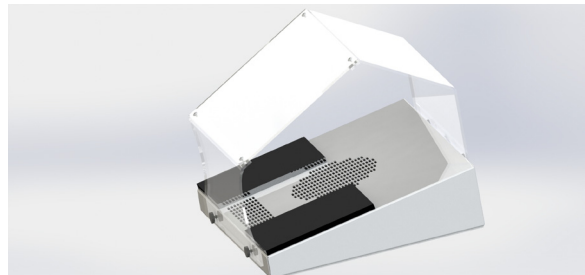
**Splash Hood - 96045**



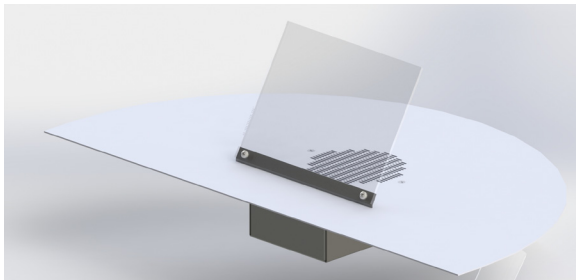
**Polyguard II - VMC-A398**



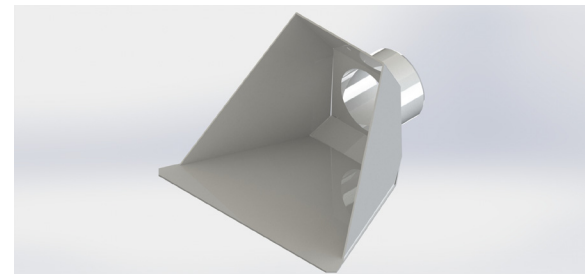
**Downdraft - 96044**



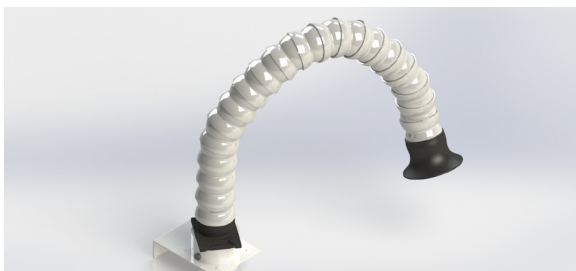
**Downdraft Pro - 96060**



**Fishmouth - VMC-A395**



**Flexhose Kit - 96026**



**Cut & Clean - 80074**

