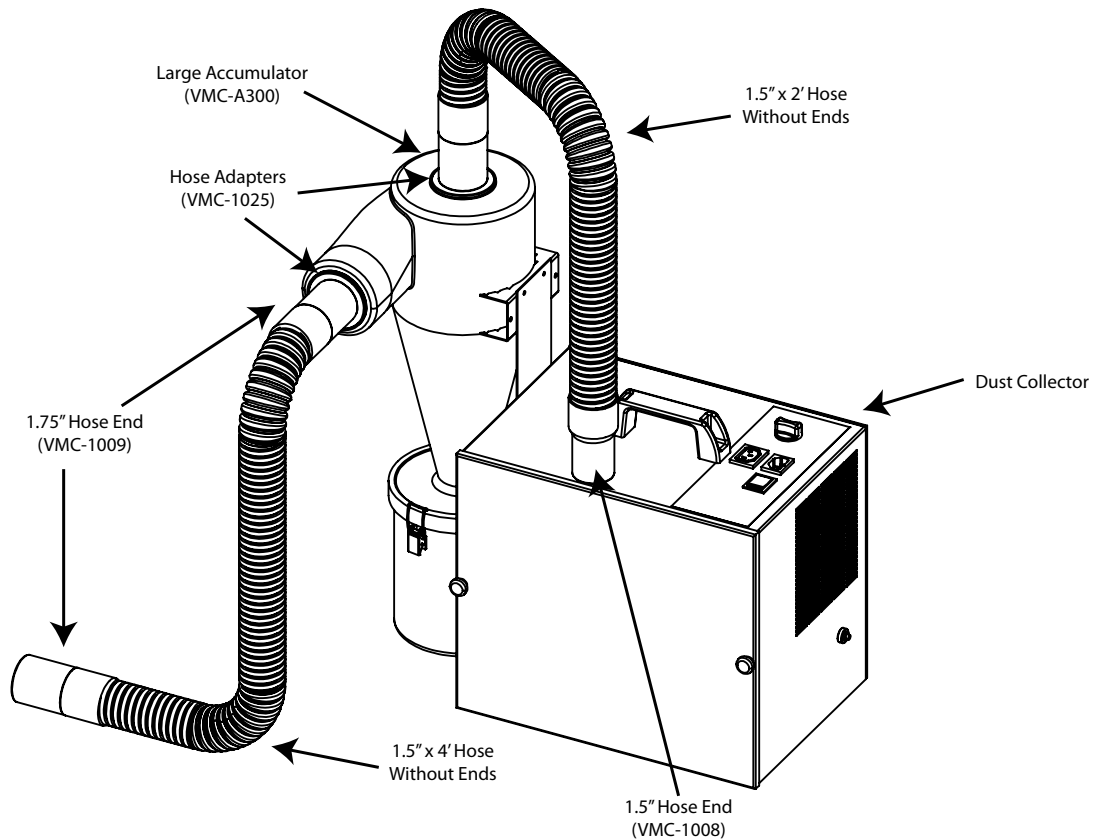


1 STATION DUST COLLECTOR W/ 1.5" HOSE & ACCUMULATOR



PACKING LIST

- 1 - Dust Collector
- 1 - Pre-Filter Accumulator
- 1 - Power Cord
- 1 - 1.5" x 2' Hose with 1.5" and 1.75" Hose Ends
- 1 - 1.5" x 4' Hose with 1.75" Hose Ends
- 2 - Adapters for Large Accumulator

IMPORTANT SERVICE INFORMATION:
SAVE SHIPPING BOX AND FOAM FOR FUTURE SERVICE. SHIPPING WITHOUT PROPER FOAM MAY CAUSE DAMAGE TO UNIT

ASSEMBLY INSTRUCTIONS

1. Mount the Accumulator according to the mounting instructions included with it, or assemble the bracket to the dust collector as illustrated. Remove the two screws provided on the side of the unit and use them to fasten the bracket to the vacuum.
2. Assemble the hose with the 1.5" hose end to the vacuum unit and the other end to the top of the Accumulator by firmly pushing the 1.75" hose end on to the adapter.
3. Connect the other hose from the side of the Accumulator and then to your station or accessory.

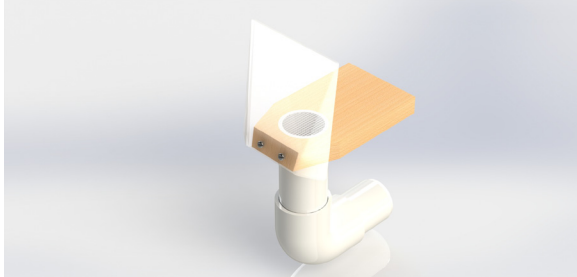
HOSE REORDER

Additional gray hose is sold by the foot as **P/N: 1450**.

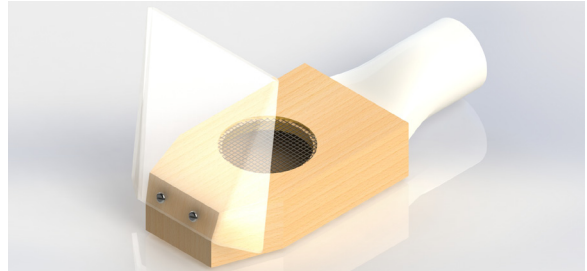
**1 STATION DUST COLLECTOR
W/ 1.5" HOSE & ACCUMULATOR**

DUST COLLECTOR ACCESSORIES

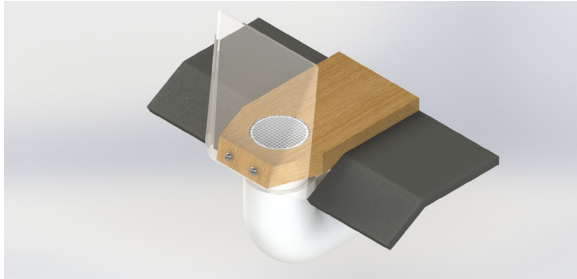
Jet Port - VMC-A440



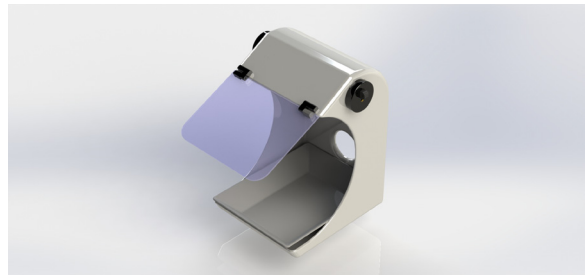
Mobile Jet Port - VMC-A442



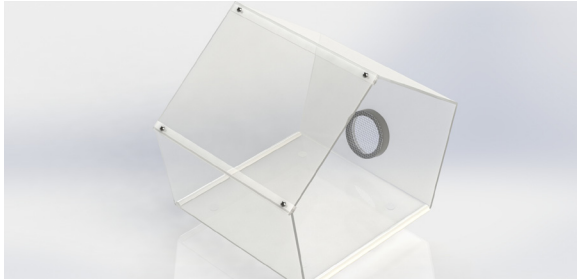
Jet Port w/ Comfort Zone - VMC-A441



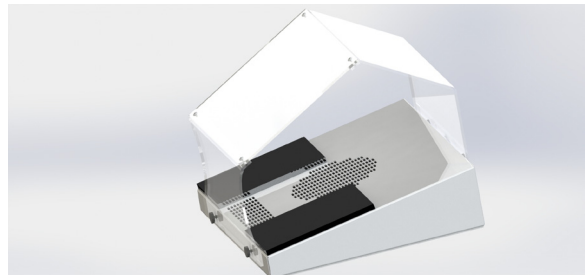
Splash Hood - 96045



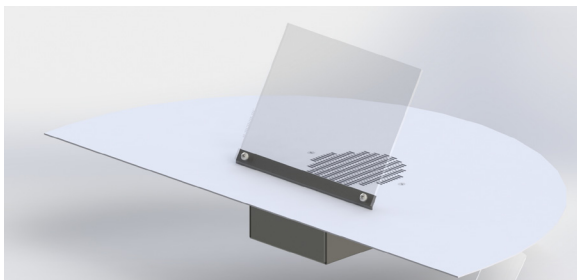
Polyguard II - VMC-A398



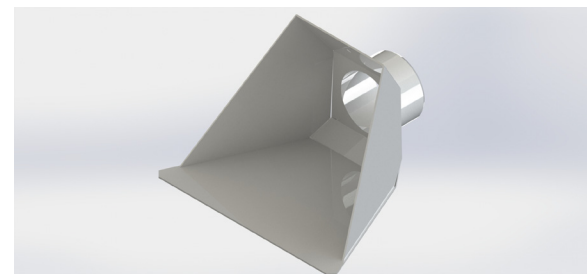
Downdraft - 96044



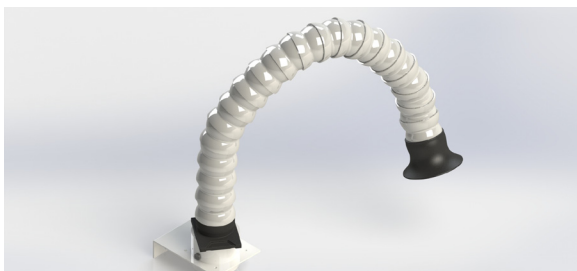
Downdraft Pro - 96060



Fishmouth - VMC-A395



Flexhose Kit - 96026



Cut & Clean - 80074

