
PACKING LIST

- 1 - Vanguard Gold 2X unit
- 1 - Power Cord
- 1 - Adapter 1½" Accessory x 2½" Hose End (VMC-1036)
- 1 - 2½" x 6' Hose (VMC-1023)

<p>IMPORTANT SERVICE INFORMATION: SAVE SHIPPING BOX AND FOAM FOR FUTURE SERVICE. SHIPPING WITHOUT PROPER FOAM MAY CAUSE DAMAGE TO UNIT</p>

ASSEMBLY INSTRUCTIONS

1. Remove the unit and other parts from the box and check against the packing list.
2. Plug the removable power cord into the socket labeled "POWER" on the top of the Vanguard. Plug the other end into a standard wall socket. Try the unit by turning the switch to the "ON" position. Use the speed control knob to select preferred speed. The speed selected will depend on the job being performed and the user's preference.
3. The vacuum hose supplied slips onto the vacuum connection on top of the unit and the other end connects to the collection device desired. The ideal location for the Vanguard is under the bench where the user works. The hose supplied is 2½" x 6 feet long and accords to the desired length. Other hose combinations are available for dual stations use. Longer hoses and adapters are available from your dealer. We recommend that you try to keep the total length of hose less than 6 feet between the unit and the dust collection point. Longer hose will reduce suction. See the accessories section for collection device details.

MAINTENANCE

1. **Filter Bag Replacement** - When a noticeable drop in suction occurs in the unit or it shuts down, or the filter bag is two thirds full, it is time to replace the filter bag. **DO NOT** attempt to clean out the filter bag. Replace with a new Vaniman filter bag. To remove the filter bag remove the two thumb screws on the front of the unit and remove the front cover plate exposing the filter bag. Remove the used filter bag by sliding it off the inlet tube. The front of the cardboard reinforcement may need to be tilted downward slightly to remove the bag easily. Check the inside of the filter bag compartment. If dust is present please clean the compartment. Cause for residual dust may be due to improper installation. Vacuuming the excess dust will increase the life of the unit. Changing the filter bag regularly will save wear- and- tear on the motor. Re-order **P/N VMC-A400-5**.

CAUTION: Operating the unit with a plugged filter bag or without one will cause permanent damage to the motor.

2. **Installing a new filter bag** - Slip the cardboard reinforcement, with rubber seal, over the inlet tube. You may need to tilt the front of the cardboard downward and slip back edge up past the tube end, then rotate upward over the tube. Carefully tuck the edges of the filter bag into the filter compartment. Replace the cover plate and gently tighten the thumb screws. Only gentle pressure need be used to make the gasket seal; the vacuum pressure will draw cover tight.
3. **Circuit Breaker** - The unit is protected by a circuit breaker on the right side of the unit. In the unlikely event there is an overload condition the breaker may trip. If this happens reset the breaker by pushing on the white button until it clicks into place.
4. **Motor Protection** - If the motor becomes too hot it will automatically shutoff to prevent damage. To reset the thermal gauge, turn off or unplug the unit and allow the motor to cool down. Once it has cooled you may turn it back on and continue use.
5. **Motor Brushes** - This long life motor does not have replaceable brushes. Replacement motors can be ordered as **P/N 97041**.

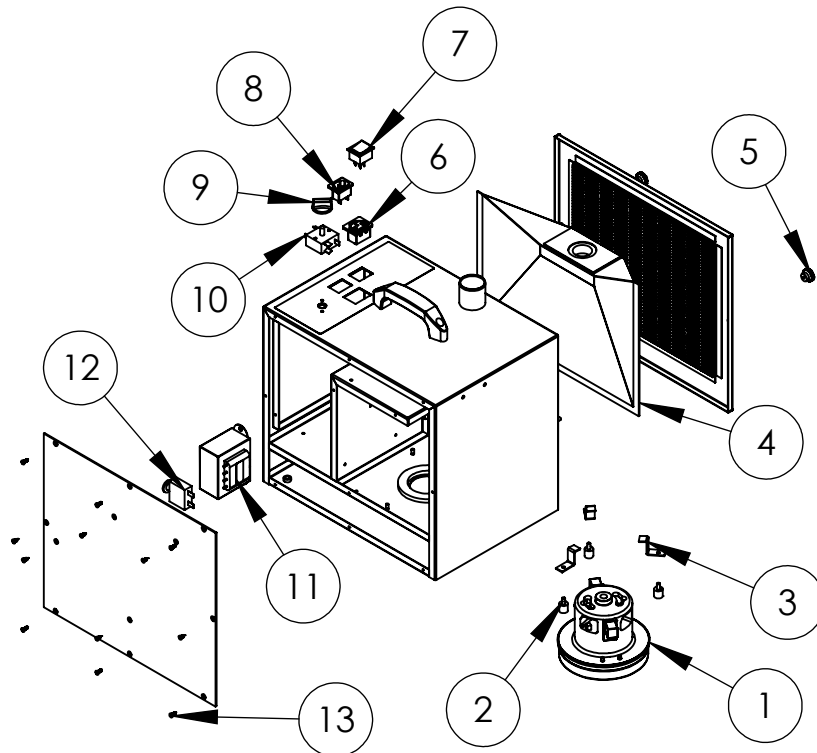
RECOMMENDED USAGE

1. Individual work station (2½" hose) or two station (1½" hose) dust collection for cutting, grinding and polishing of metal, porcelain, plastic and stone.
2. The unit may be used alone or in conjunction with the Large Vaniman Accumulator. The Accumulator will trap 90 - 95% of the dust in the collection trap, extending the life of the filter bag by up to 10 times.
P/N VMC-A300
3. The Vanguard is **NOT RECOMMENDED** for use with aluminum oxide abrasive blasting. Such use will void the warranty. The fine abrasive particles will cause motor damage. However, Vaniman has a suction unit designed specifically for abrasive blasters. It is called the SandVac (10211). Contact your dealer for availability.

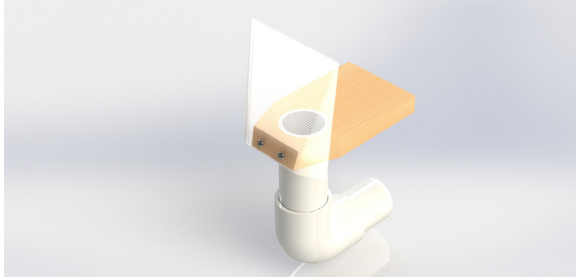
REPLACEMENT PARTS

The following items are offered to enhance the usage of your quality Vaniman unit. These items can be order through your supplier using the following part numbers. Please feel free to contact Vaniman Mfg. Co. with questions regarding our products.

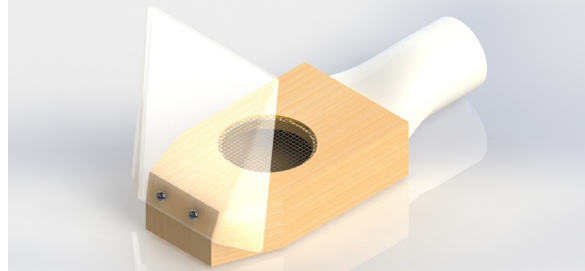
Fig. #	Description	Part Number
1	Motor	97041
2	Motor Mount	2921
3	Motor Clip	3389
4	Replacement Filter Bag 3-pack	VMC-A400-3
	Replacement Filter Bag 5-pack	VMC-A400-5
5	Front Cover Thumbscrew, Pair	2984
6	Remote Plug	1427
7	Power Switch ON/OFF	2904
8	Power Connector	3010
9	Rotary Switch Knob	1471
10	Rotary Switch	3019
11	Transformer	1419
12	Circuit Breaker, 15Amp	2869
13	Back Cover Screw 6-32 X 3/8" FHSMS	1448A
Not Shown	Protective Switch Cover	1003B
Not Shown	Power Cord	1422



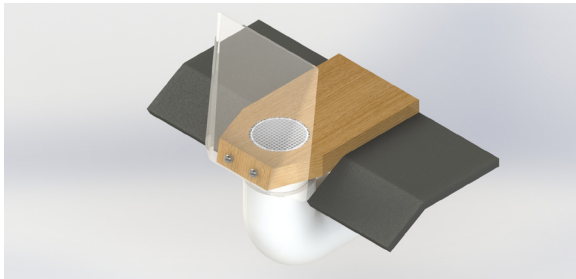
Jet Port - VMC-A440



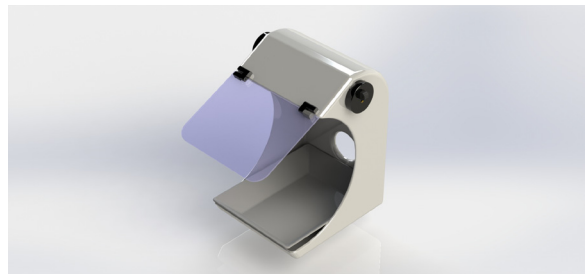
Mobile Jet Port - VMC-A442



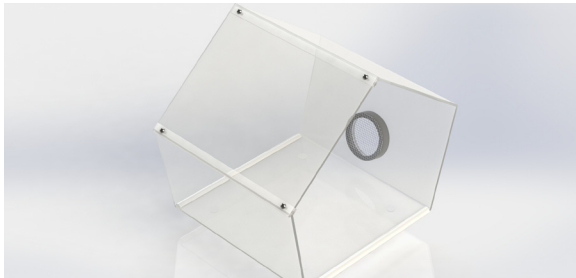
Jet Port w/ Comfort Zone - VMC-A441



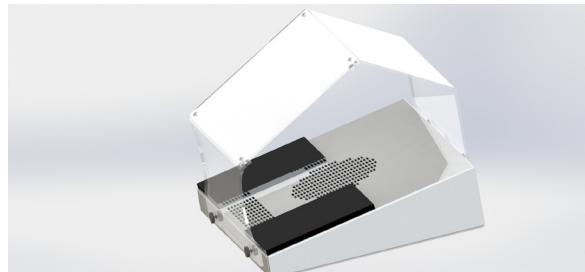
Splash Hood - 96045



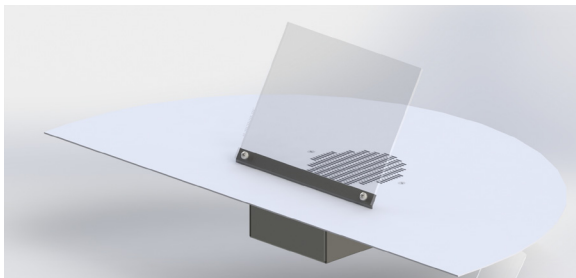
Polyguard II - VMC-A398



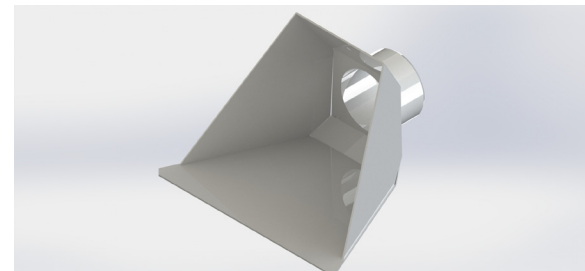
Downdraft - 96044



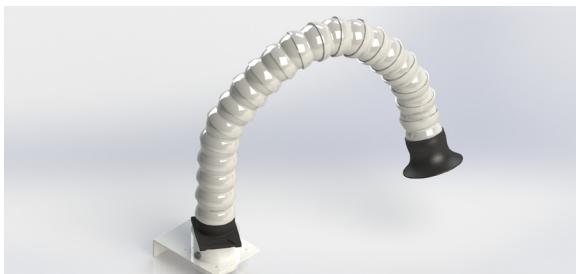
Downdraft Pro - 96060



Fishmouth - VMC-A395



Flexhose Kit - 96026



Cut & Clean - 80074

