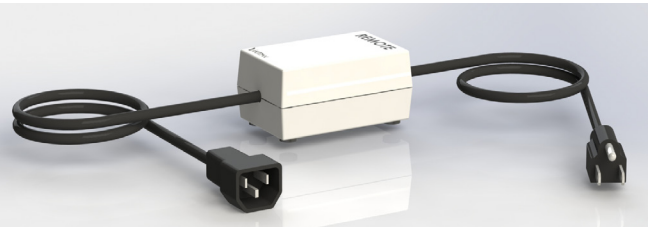
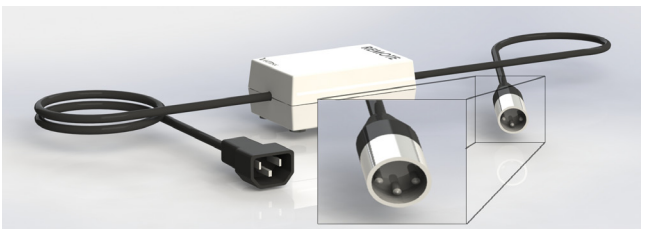
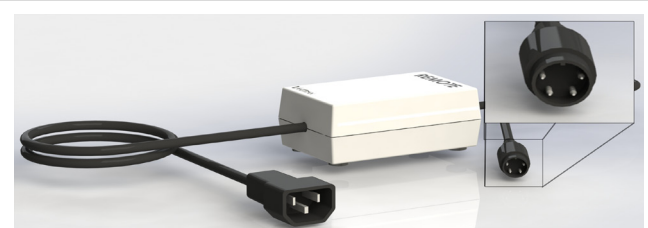
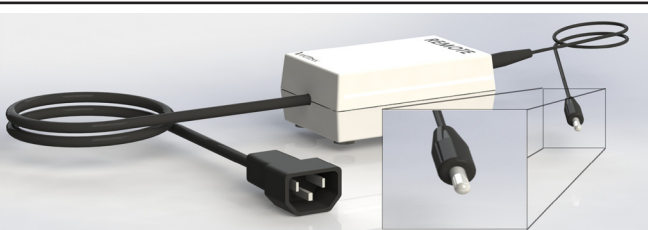
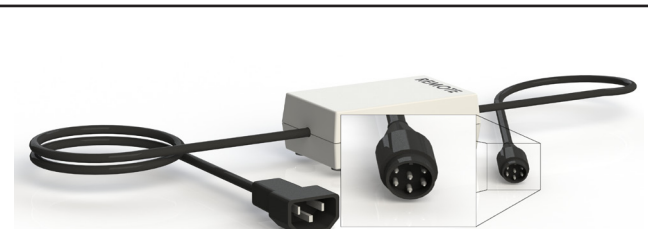


INTRODUCTION:

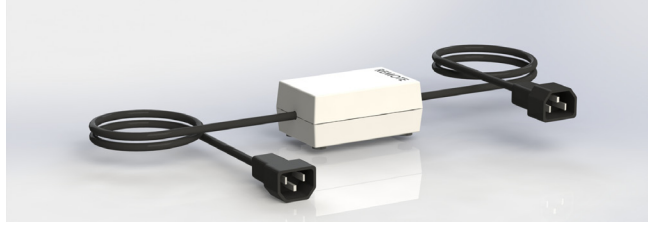
The Vaniman Stone Vac II is commonly used for dust collection for a variety of mills. This adapter guide shows the difference in each remote and a list of mills that use them.

ASSEMBLY INSTRUCTIONS:

When connecting a Mill Remote to a dust collection unit, turn the dust collector On and run the unit before connecting your Mill Remote. Once the unit has been tested, turn it off, then plug the appropriate end of the mill remote into the dust collector's remote port and the other into the mill. Refer to the specific dust collectors user manual for remote operation.

<p>Lava Part Number: 10514</p>	
<p>LaserDental Part Number: 96054</p>	
<p>Wieland - Zenotec VHF Mills: Preciso M200 (Jensen) / MasterMill / BruxZir (Glidewell) CAM 4-K4 / CAM 5-S1 / CAMV 5-S2 Part Number: 96059</p>	
<p>Roland DWX-52DC Roland DWX-52DCi Roland DWX-51D Roland DWX-50 EGX-350 Part Number: 11054</p>	
<p>VHF K5 Impression Part Number: 96078</p>	

Zirkon Zahn
Part Number: 10523



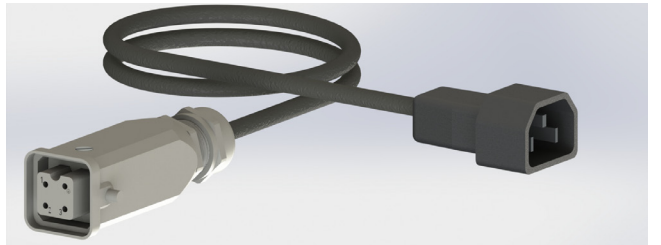
IMES Mill
Part Number: 96077



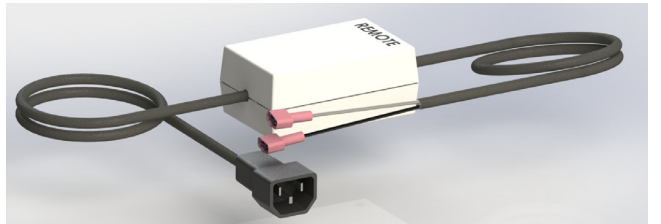
Yenna Mill
M450i
Part Number: 10520



DentalMachine - A5, C5, C6
Part Number: 11063



Digital Dental
Part Number: 10525



ARUM 5X-300
Part Number: 11065

