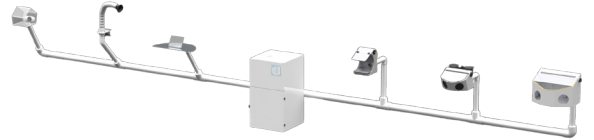




The flagship Vaniman dust collector is powerful enough to provide suction for up to six workstations or up to four dental mills simultaneously. The newest generation V6 also uses smart suction operation to provide exactly enough power depending on how many stations or mills are in use, ONLY while they are in use.

MODEL FEATURES

- SmartSpeed technology automatically adjusts motor speed depending on which stations or mills are in use at one time
- CAMLink Technology for seamless & reliable CAD/CAM operation
- HEPA Filtration
- Push-button “Air Pulse” filter maintenance system
- Large dust collection tray
- Easy maintenance (all parts replaceable)
- Two year manufacturer’s warranty*



The V6 SE is Vaniman’s largest dust collector and works with most dental mills. If you are unsure about whether a specific mill is compatible with this unit, please contact Vaniman Manufacturing Co.

MODEL SPECS

Motor rating	288 CFM
Measurements	21” long x 20” wide x 36” high
Weight	136 lbs.
Voltage/Amperage	120V, 60Hz, 15A (220V / 240V available)
Plumbing inlet plate options	2.5 in. (4 ports), 3 in. (4 ports), or 4 in. (2 ports)

PN: 10281

The V6 SE was designed for virtually any dry dental lab material.

*Unit warranty is two years. Motor warranty is six months. Inquire with Vaniman Manufacturing Co. for details.

Manufactured in California, USA



vaniman.com
+1.760.723.1498
sales@vaniman.com