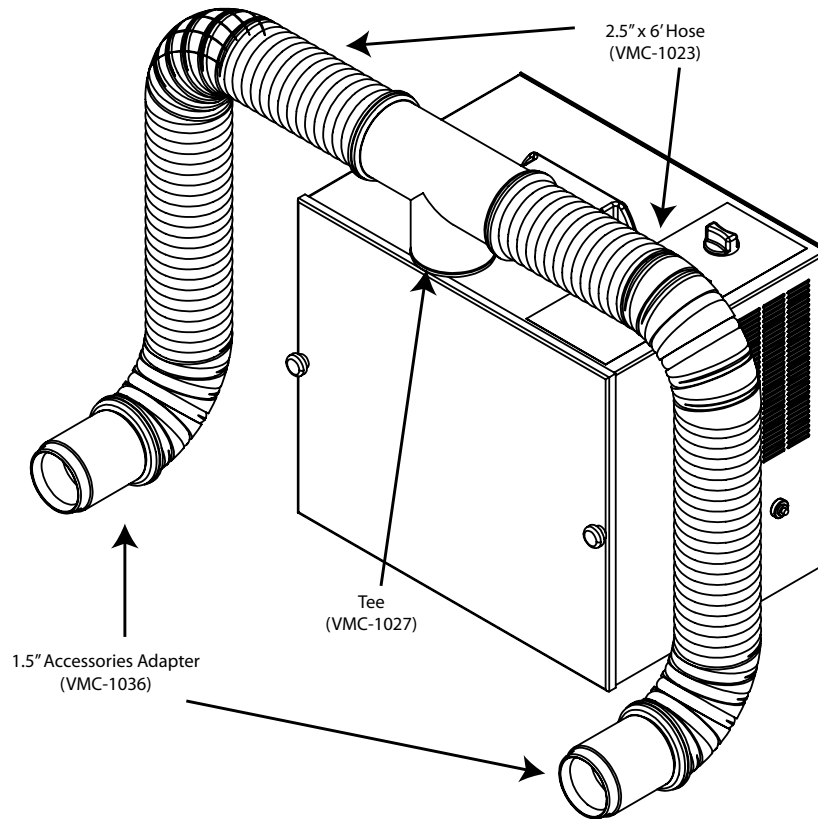


2 STATION DUST COLLECTOR W/ 2.5" HOSE



PACKING LIST

- 1 - Dust Collector
- 1 - Power Cord
- 1 - Tee
- 2 - 2.5" x 6' Hose
- 2 - Adapter for 1.5" Accessories

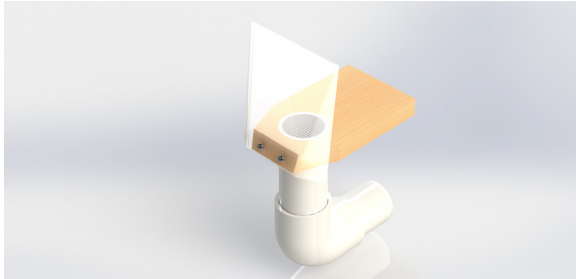
IMPORTANT SERVICE INFORMATION:
SAVE SHIPPING BOX AND FOAM FOR FUTURE SERVICE. SHIPPING WITHOUT PROPER FOAM MAY CAUSE DAMAGE TO UNIT

ASSEMBLY INSTRUCTIONS

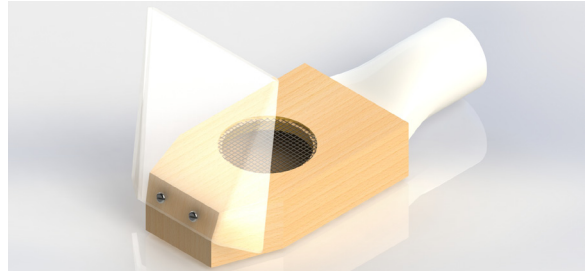
1. Attach the Tee to the Dust Collector but firmly sliding it onto the inlet tube.
2. Connect the two 2.5" x 6' Hoses to the tee.
3. If necessary, attach the adapter for the 1.5" accessories by sliding the black coupler on to the hose end. The white rubber end of the adapter then slides onto the 1.5" accessories connection point.

DUST COLLECTOR ACCESSORIES

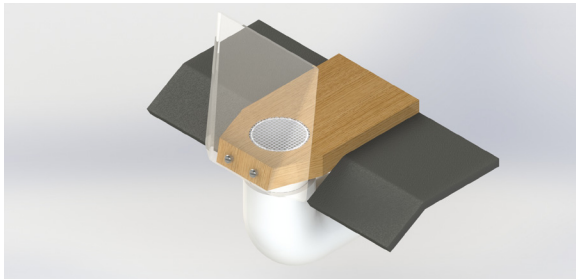
Jet Port - VMC-A440



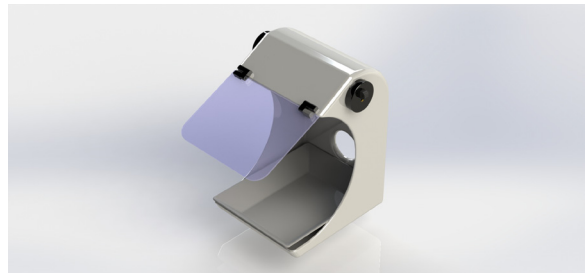
Mobile Jet Port - VMC-A442



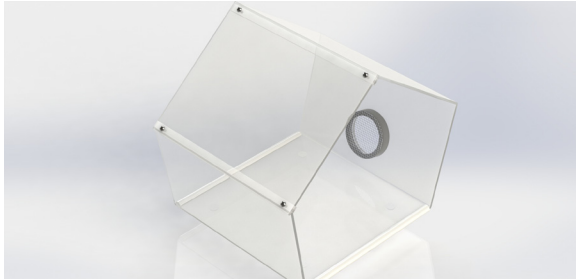
Jet Port w/ Comfort Zone - VMC-A441



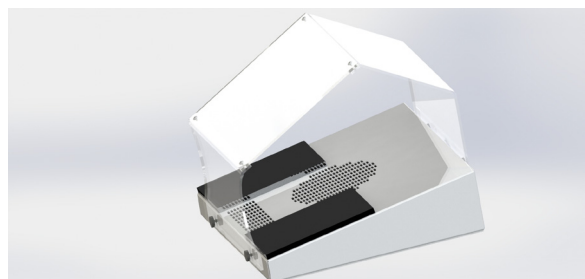
Splash Hood - 96045



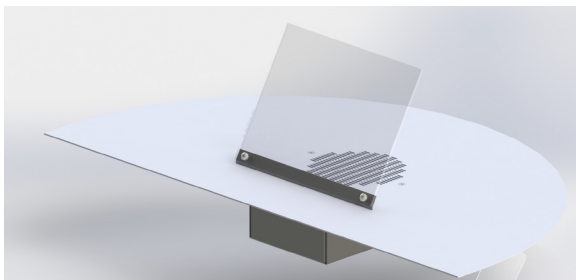
Polyguard II - VMC-A398



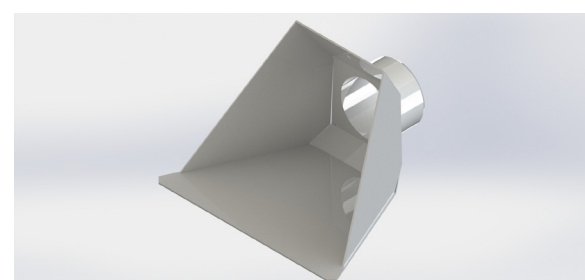
Downdraft - 96044



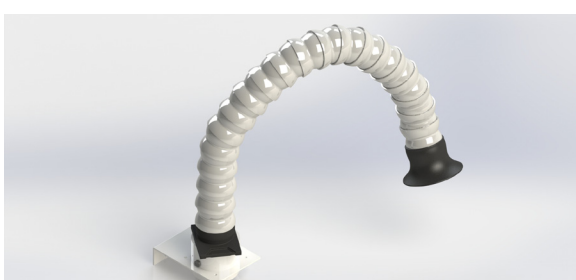
Downdraft Pro - 96060



Fishmouth - VMC-A395



Flexhose Kit - 96026



Cut & Clean - 80074

