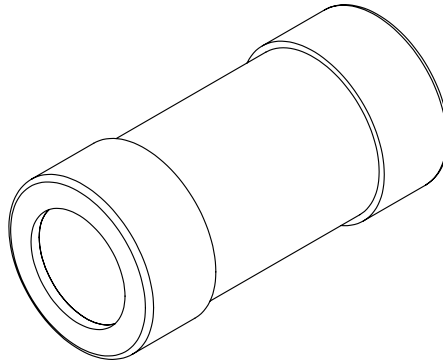

PACKING LIST

- 1 - Muffler
- 2 - Adapters (VMC-1006A)

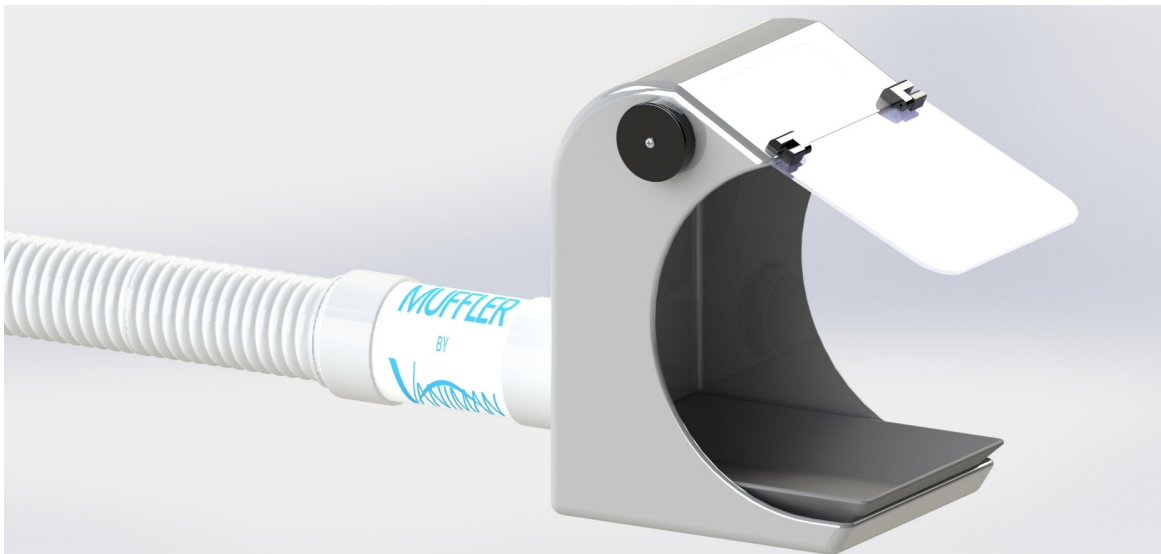


RECOMMENDED USAGE

1. Vaniman's Muffler is designed to help reduce excessive suction noise at workstations connected to a dust collector for a better user experience.
2. The Muffler should be added in the plumbing line between the workstation accessory or attachments and the dust collection unit. Placing the Muffler as close to the workstation accessory or attachments as possible will help to reduce the most amount of noise.

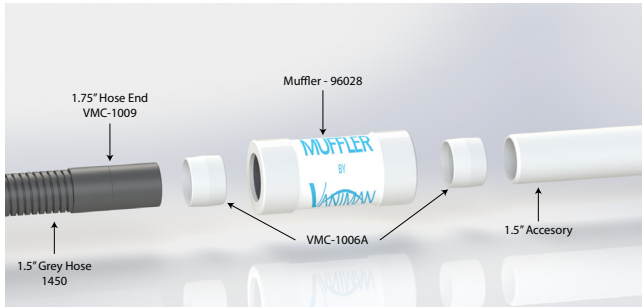
ASSEMBLY INSTRUCTIONS

1. Remove the Muffler and adapters from its packaging.
2. The Muffler can be connected to 1.5" and 2.5" plumbing:
 - A. **1.5" Plumbing Connection:** Use the two VMC-1006A adapters to connect 1.5" plumbing connections to the Muffler. Slide the adapters over the 1.5" hose or piping, then slide the plumbing with the adapter into one end of the Muffler (direction does not matter). Complete the same process for the other end of the Muffler.
 - B. **2.5" Plumbing Connection:** Slide the 2.5" hose end or piping directly into one end of the Muffler until secure. Complete the same process for the other end of the Muffler.



MUFFLER CONNECTION GUIDE

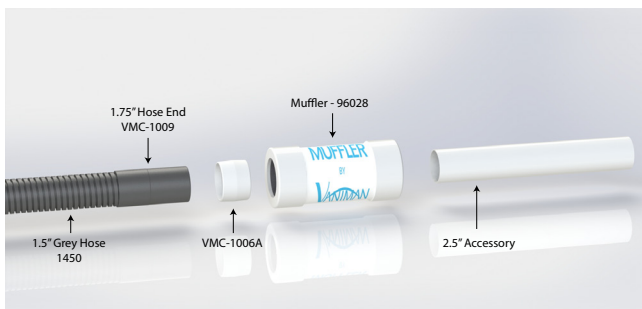
1.5" Hose to 1.5" Accessory Connection



2.5" Hose to 2.5" Accessory Connection



1.5" Hose to 2.5" Accessory Connection



2.5" Hose to 1.5" Accessory Connection

