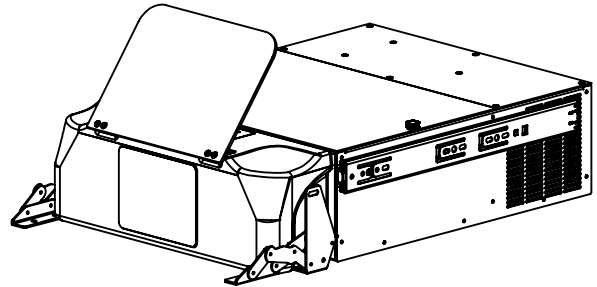


PACKING LIST

- 1 - Dust Collector
- 1 - Set of Side Mount Front Fold Hinges
- 7 - #8 x 1/2" Screws for Mounting Slides and Clamp
- 8 - #6 x 3/8" Screws for Mounting Front Hinges
- 1 - Cable Clamp
- 1 - Power Cord
- 1 - Left and Right Side Hole Pattern Sheets



IMPORTANT SERVICE INFORMATION

Save shipping box and foam for future service. Shipping without proper foam may cause damage to the unit.

ASSEMBLY INSTRUCTIONS

1. Remove the unit and other parts from the box; check against the packing list.
2. Reference the Hole Pattern Sheets and place them on the left and right insides of your drawer.
3. Drill the indicated holes 3/8" deep.
4. Detach the outer portion of the drawer slides on the dust collector.
5. Using 6 of the #8 x 1/2" screws, install the detached drawer slides to the walls of the drawer.
6. Using 4 of the #6 x 3/8" screws, install the front hinges to the walls of the drawer.
7. Install the dust collector by connecting the slides installed on the dust collector into the slides installed in the drawer box.
8. Unfold the hinges and place the drawer front underneath them, aligning it so that the drawer is centered and the drawer can be opened and closed easily. Mark on the drawer front where the hinge holes are.
9. In the drawer front drill 3/8" deep holes at the hinge hole locations using a 3/32" drill bit.
10. Install the hinges to the drawer front using the remaining 4 #6 x 3/8" screws.
11. Open the drawer front and pull the dust collector out until the slides stop. Remove the dust collector from the slides.
12. Use the Steel Clamp and last #8 x 1/2" screw provided to clamp the power cord to the rear most 1/8" hole. Ensure the cord has enough room to plug into the dust collector and stay plugged in for all 14" of slide motion. This will ensure the cord does not unplug during normal use.
13. The dust collector will vent through the rear of the unit. The air will be forced to flow towards the front of the cabinet. If this is impeding operation, a hole size recommendation of 3 inches may be bored in the rear or side walls near the back to allow air an escape path.

OPERATION

1. Open the drawer front.
2. To pull the unit from the drawer box, first push on the front to release the push-to-open mechanism.
3. Use the grooves on either side of the drawer front to pull the unit out until it is at comfortable distance.
4. Lift the protective shield to clear space above the dust collection grate.
5. Observe the front control panel. There are three buttons.
 - a. The single button located on the right turns the unit on and off.
 - b. The two buttons to the left increase (top) and decrease (bottom) the motor speed.
 - c. The speed buttons can be held down in order to rapidly change speeds.
6. Turn the dust collector on and set the motor speed to create the desired level of suction.
7. Perform work over the suction grate as needed.
8. When finished, turn the unit off by pressing the single button located on the right side of the dust collector.
9. Lower the protective shield until it lays flat against the dust collector.
10. Slide the dust collector back into the drawer box until the push-to-open mechanism latches and the unit will not slide forward.
11. Close the drawer front.

MAINTENANCE

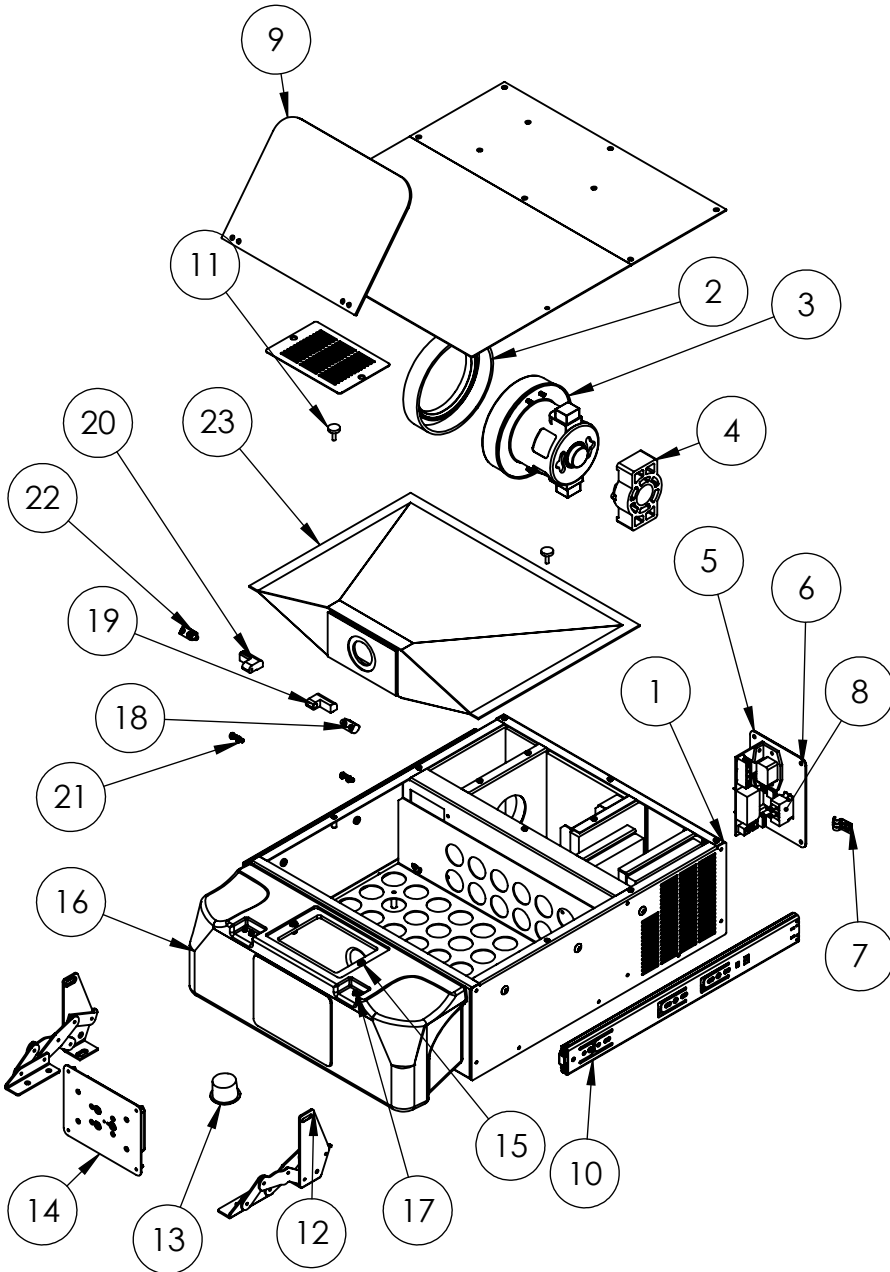
1. Filter Bag Replacement - When a noticeable drop in suction occurs with the unit or it shuts down, it may be time to replace the filter bag. DO NOT attempt to clean out the filter bag, instead replace with a Vaniman filter bag (97089). To gain access to the filter bag, unscrew the two thumb screws located on the top panel and remove the cover plate. The filter bag is yellow in color and can be removed by sliding it off the inlet tube. The front of the cardboard reinforcement may need to be tilted downward slightly to remove bag easily. Dispose of the used bag accordingly. Before installing the new filter bag, clean the inside of the dust collector for dust and/or any other debris that may have accumulated. This will increase the life of the unit. Filter bag re-order number is 97089.
2. Installing a new filter bag - slip the cardboard reinforcement, with rubber seal, over the inlet tube. You may need to tilt the front of the cardboard downward and slip the back edge up past the tube end, then rotate upward over the tube end. Carefully tuck the edges of the filter bag into the filter bag cavity. Replace the cover plate and gently tighten the thumb screws. Only gentle pressure needs to be used to make the gasket seal; the vacuum pressure will draw the cover tight.
3. Circuit Breaker - The unit is protected by a circuit breaker in the power switch located on the rear of the unit. In the unlikely event there is an overload condition the breaker may trip. If this happens reset the breaker by flipping the Power Switch to OFF then back to ON.
4. Motor - Fully remove the dust collector from the drawer and set it on a table top. Remove the screws from the top rear plate and set aside. Unplug the current motor from the power module. Lift the motor out. Place the new motor assembly in, PN: 97105, and reuse the old gaskets. Plug the motor into the same location on the power module and replace cover plate and screws.

RECOMMENDED USAGE

Individual work station dust collector for cutting, grinding and polishing of metal, porcelain, plastic and stone.

REPLACEMENT PARTS

The following items are offered to enhance the usage of your quality Vaniman unit. Please feel free to contact Vaniman Manufacturing Co. with questions regarding our products.



#	Part Number	Description	QTY
1		DDS Sheet Metal Case	1
2	96079 (1/2)	DDS Gasket (Big)	1
3	97105	DDS Motor	1
4	96079 (2/2)	DDS Gasket (Small)	1
5	96080	DDS Power Module	1
6		6-32x3/8" Screw	4
7		Steel Clamp w/ Mounting Hole	1
8	3285	15Amp Breaker	1
9	2333	Shield	1
10	3334	14" Push-open Slide Set	1
11	2926	8-32 Thumb Screw Knobs	2
12	3333	90° Hinge Pair	1
13		Cap 1" Red	1
14	96081	DDS Speed Control Module	1
15		6-32x3/8" Flathead Screw	2
16		DDS Front Cabinet	1
17		6-32x3/8" Screw	4
18		Friction Hinge	1
19		Friction Hinge Rev. Block	1
20		Friction Hinge Block	1
21		6-32x5/16" Screw	4
22		Friction Hinge Rev. Pin	1
23	97089	DDS Filter Bag	1