

## Warnings and Precautions

This dust collector is designed to run on 115 volt alternating current, 60 Hz supply voltage in temperatures ranging from -10 to +40 degrees celcius. With a maximum current usage of 15 amps. The plug on the unit labeled "Power" is for the supply line cord provided. The supply plug in the wall must have a wired ground and if the back cover is removed for any reason, do not bypass the protective earthing.

This dust collector is to be used for capturing fine aerosols. Not suitable for direct liquid suction.

When placing the unit in a location be sure that the power connector is accessible at all times. Any side of the dust collector that has a vent on it must be a minimum of 2 inches from any obstruction, and have a vent area of 20 square inches to allow ventilation to ambient room air. This will keep the unit cool and ensure a longer motor life.

Failure to comply with the precautions listed here or any others for this equipment may cause electrical shock or equipment failure.

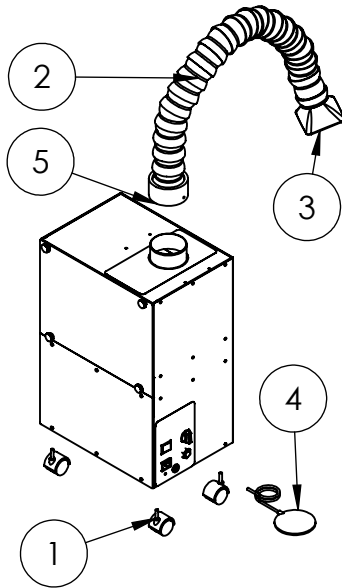


- Alternating Current



- Caution, risk of electrical shock

## VANGUARD MOBILE 2.0 EXTRAORAL SUCTION



Replacement Parts		
Fig. #	Description	Part Number
1	Caster Wheels	3140
2	Flex Hose - 1ft	96002
2	Flex Hose - 3ft	96001
3	Rectangular Nozzle (5 Pack)	96090
3	Round Nozzle (5 Pack)	96091
4	Foot Remote/Bellows	1443
5	Flex Hose Adapter	96006

### PACKING LIST

- 1 - Vanguard Gold Mobile
  - 1 - Flex Hose Assembly
  - 1 - Nozzle
  - 1 - Power Cord
  - 4 - Caster Wheels
  - 1 - Foot Remote/Bellows
- Tools Needed: Wrench (1/2" or adjustable)

**IMPORTANT SERVICE INFORMATION:**  
 SAVE SHIPPING BOX AND FOAM FOR FUTURE SERVICE. SHIPPING WITHOUT PROPER FOAM MAY CAUSE DAMAGE TO UNIT

### ASSEMBLY INSTRUCTIONS

1. Remove the four castor wheels from the bag packed with the power cord. Lay the unit on its back on top of several pieces of foam packaging to protect it. Screw the four castor wheels into the four threaded holes in the bottom of the unit. Use a wrench to tighten the castor wheel to the case, **BUT DO NOT OVER TIGHTEN.**
2. Connect the Flex Hose assembly to the top of the unit by sliding the white end of the hose onto the inlet tube. Adjust the Flex Hose to the desired position.
3. Plug one end of the removable power cord into the socket labeled "Power Cord" on the side of the unit, and the other end into a standard grounded wall socket. Test the unit by flipping the *On/Off* switch into the On position. **NOTE:** If using the On/Off switch to turn the unit On, you MUST use the same switch to turn the unit Off.
4. While the unit is Off, plug the black foot remote tube into the round black port labeled "Remote" on the unit. To use the foot remote instead of the *On/Off* switch for sanitary purposes, leave the *On/Off* switch on the top of the unit in the Off position. Test the remote function by pressing on the round bellows to turn it On; press it again to turn it Off. **NOTE:** If using the foot remote to turn the unit On, you MUST use the foot remote to turn the unit Off as well. Once the foot remote air switch has been activated by the foot remote, the On/Off switch will not turn the unit Off, only the foot switch will.

---

## **VANGUARD MOBILE 2.0**

### **EXTRAORAL SUCTION**

---

---

### **DISINFECTION INSTRUCTIONS**

---

1. Only use a hot, soapy solution or Isopropyl Alcohol to disinfect your hose. Many of the chemicals used in typical disinfectants will cause the plastic to deteriorate quickly and break easily. Vaniman offers a surface cleaning spray for specifically disinfecting your hose safely. The Surface Disinfectant Spray can be ordered as P/N 3556.

**NOTE:** Never use any disinfectant or cleaning solution that contains **Hydrogen Peroxide**. If you are unsure if a particular solution is usable, please contact Vaniman for guidance.

2. The nozzle can be removed and washed with hot soapy water, Isopropyl Alcohol, cold sterilized or Vaniman's Surface Disinfectant Spray. **THE NOZZLE IS NOT AUTOCLAVABLE.**

---

### **FILTER REPLACEMENT INSTRUCTIONS**

---

\*\*\* To prevent additional spread of virus or bacteria, it's advised to contact the CDC for proper handling protocol with specific pathogens\*\*\*

1. Turn off the unit.
2. Wearing full PPE (per the CDCs recommendations), set aside a sealable bag for disposing the filter(s).
3. Remove the four thumb screws on the front of unit and set aside for later use.
4. Remove the panel to expose the HEPA and pre-filter.
5. Remove either the HEPA filter and/or pre-filter by pulling on the tab. Once removed, place filters into a sealable bag for disposal.
6. Remove any packaging from the replacement HEPA and pre-filter. Carefully align the HEPA filter frame with the outer walls of the unit, sit the filter onto the guide ledge, and slide until the filter stops. Once the HEPA filter is installed, carefully place the replacement pre-filter on top of the HEPA filter.
6. Put the front panel back on the unit and secure with thumb screws.
7. Dispose of the sealed bag containing the used filter(s) per the CDCs recommendations.
8. Replace HEPA filter when it becomes excessively dirty, or every 6-12 months.

---

### **MAINTENANCE**

---

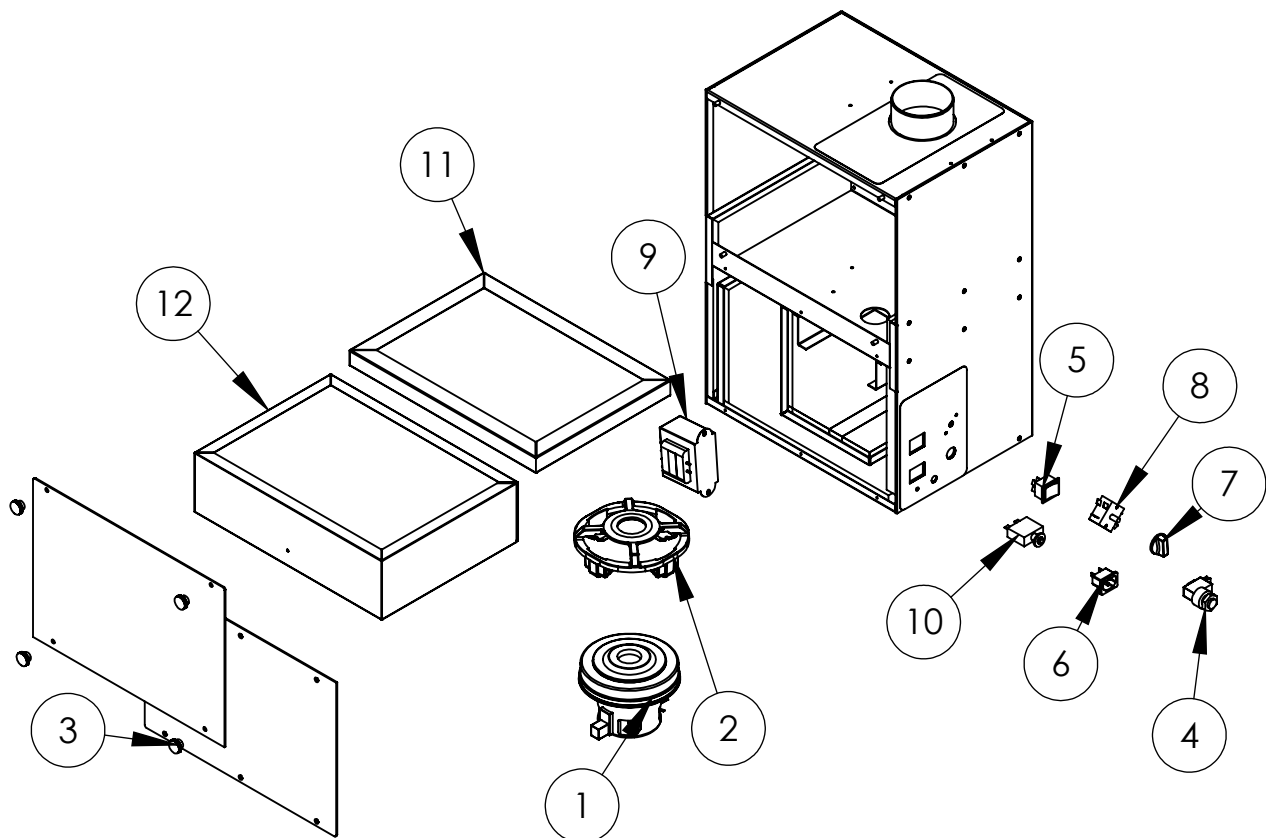
1. **Circuit Breaker** - The unit is protected by a circuit breaker on the left side of the unit. In the unlikely event there is an overload condition the breaker may trip. If this happens reset the breaker by pushing on the white button until it clicks into place.
2. **Motor Protection** - If the motor becomes too hot it will automatically shutoff to prevent damage. To reset the thermal gauge, turn off or unplug the unit and allow the motor to cool down. Once it has cooled you may turn it back on and continue use.
3. **Motor Brushes** - This long life motor does not have replaceable brushes. Replacement motors can be ordered as P/N 97041.

## VANGUARD MOBILE 2.0 EXTRAORAL SUCTION

### REPLACEMENT PARTS

The following items are offered to enhance the usage of your quality Vaniman unit. These items can be order through your supplier using the following part numbers. Please feel free to contact Vaniman Mfg. Co. with questions regarding our products.

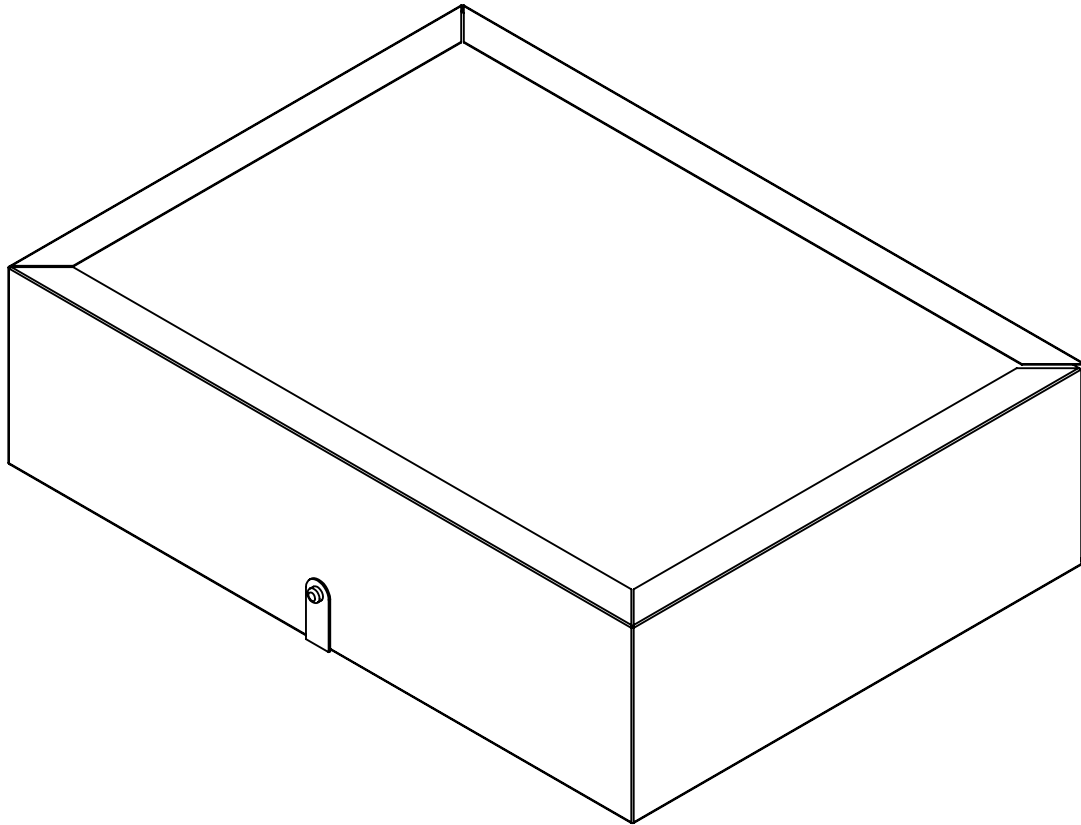
<i>Fig. #</i>	<i>Description</i>	<i>Part Number</i>
1	Replacement Motor	97041
2	Motor Gasket	3396
3	Front Cover Thumb Screws	2984
4	Remote Plug Air Switch	1442
5	Power Switch ON/OFF	2904
6	Power Connector	3010
7	Rotary Switch Knob	1471
8	Rotary Switch	3019
9	Transformer	1419
10	Circuit Breaker, 10Amp	2869
11	Pre-filter	96098
12	HEPA Filter	96097
Not Shown	Power Cord	1422



---

**VANGUARD MOBILE 2.0**  
**EXTRAORAL SUCTION**

---



---

**PACKING LIST**

---

1 - HEPA Filter with Gasket

---

**ABOUT THE PRODUCT**

---

This filter kit is designed to make your job more comfortable and safer by removing 99.97% of dust, airborne particles, and any other materials evacuated by the dust collector. This filter is designed to be added internally to the Vanguard Mobile 2. It is a HEPA grade filter to ensure effective filtration.

---

**INSTALLATION INSTRUCTIONS**

---

1. Remove the top access door from the dust collector by unscrewing the four thumbnuts.
2. Remove the HEPA and Pre-filters from the unit by sliding both filters out.
3. Remove any packaging from the HEPA and Pre-filters. Carefully align the HEPA filter frame with the outer walls of the unit, sit the filter frame on the guide rails, and then slide the filter in until it stops.
4. Carefully align the Pre-filter frame with the outer walls of the unit, sit the filter frame on top of the HEPA filter, and slide the filter in until it stops.
5. When the filter becomes excessively dirty, or suction is impeded, replace both the HEPA filter and the Pre-filter.