
VANGUARD GOLD MOBILE
EXTRAORAL SUCTION

Warnings and Precautions

This dust collector is designed to run on 115 volt alternating current, 60 Hz supply voltage in temperatures ranging from -10 to +40 degrees celcius. With a maximum current usage of 15 amps. The plug on the unit labeled "Power" is for the supply line cord provided. The supply plug in the wall must have a wired ground and if the back cover is removed for any reason, do not bypass the protective earthing.

This dust collector is to be used for capturing fine aerosols. Not suitable for direct liquid suction.

When placing the unit in a location be sure that the power connector is accessible at all times. Any side of the dust collector that has a vent on it must be a minimum of 2 inches from any obstruction, and have a vent area of 20 square inches to allow ventilation to ambient room air. This will keep the unit cool and ensure a longer motor life.

Failure to comply with the precautions listed here or any others for this equipment may cause electrical shock or equipment failure.



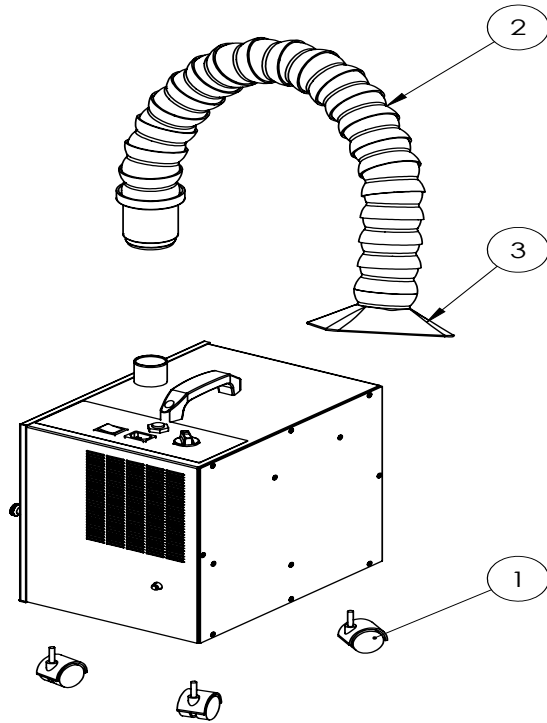
- Alternating Current



- Caution, risk of electrical shock

VANGUARD GOLD MOBILE

EXTRAORAL SUCTION



| Replacement Parts | | |
|-------------------|--------------------------------|-------------|
| Fig. # | Description | Part Number |
| 1 | Caster Wheels | 3140 |
| 2 | Flex Hose - 3' | 96001 |
| 2 | Flex Hose - 1' | 96002 |
| 3 | Rectangular Nozzle (5 pack) | 96090 |
| Not Shown | HEPA Filter Cartridge | 97016 |
| Optional | Round Nozzle (5 pack) | 96091 |
| Not Shown | Foot Remote/Bellows | 1443 |

PACKING LIST

- 1 - Vanguard Gold Mobile
 - 1 - Internal HEPA Filter
 - 1 - Power Cord
 - 1 - 4' Flex Hose
 - 4 - Caster Wheels
 - 1 - Foot Remote/Bellows
- Tools Needed: Wrench (1/2" or adjustable)

IMPORTANT SERVICE INFORMATION:
 SAVE SHIPPING BOX AND FOAM FOR FUTURE SERVICE. SHIPPING WITHOUT PROPER FOAM MAY CAUSE DAMAGE TO UNIT

ASSEMBLY INSTRUCTIONS

1. Remove the four caster wheels from the bag packed with the Flex Hose. Lay the unit on its back on top of several pieces of foam packaging to protect it. Screw the four caster wheels into the four threaded holes in the bottom of the unit. Tighten them with a wrench.
2. Connect the Flex Hose kit to the inlet tube on the top of the unit. Adjust the Flex Hose to the desired position.
3. Plug the removable power cord into the socket on the top of the unit. Plug the other end into a standard grounded wall socket. Connect the black foot remote tube to the black remote switch connector on the unit; test by turning the power switch on or by pressing the foot remote. Located on the top of the unit is the On/Off switch. Turn the unit on and adjust the amount of suction by turning the rotary selector. The unit can be turned on and off by depressing the foot remote.

DISINFECTION INSTRUCTIONS

1. Using disinfectant, spray outside and inside of Flex Hose between sessions. Unit may remain on during this step.

VANGUARD GOLD MOBILE

EXTRAORAL SUCTION

2. Nozzle can be removed and washed with hot soapy water, or cold sterilized. Nozzle is not autoclavable.

FILTER REPLACEMENT INSTRUCTIONS

*** To prevent additional spread of virus or bacteria, it's advised to contact the CDC for proper handling protocol with specific pathogens***

1. Turn off the unit.
2. Wearing full PPE (per the CDCs recommendations), set aside a sealable bag for disposing the filter(s).
3. Remove the two thumb screws on the front of unit and set aside for later use.
4. Remove the panel to expose the filter bag and HEPA filter. For filter bag replacement continue to step 5. For HEPA filter replacement continue to step 6.
5. Filter bag should be replaced at least once every 3 months. Firmly grab filter bag at the connection point and pull down. A rocking motion may be required. Place filter bag into a sealable bag. Disinfect the inside of the unit. Holding the replacement filter bag by ridged opening, secure the filter bag onto the inlet until there is no space between the top of the unit and the filter bag.

If only replacing the filter bag please proceed to step 7.

6. The HEPA filter should be replaced every 6-12 months. To change HEPA filter, remove the filter access panel (front cover) from the dust collector, and remove the filter bag from the unit or lift it up to expose the filter slot. Remove HEPA filter by pulling on tab and place into sealable bag for disposal. Remove any packaging from the replacement HEPA filter, carefully align the filter frame over the filter slot, then slide the filter into place with the filter gasket facing upwards. Replace HEPA filter when the filter becomes excessively dirty.
7. Put the front panel back on the unit and secure with thumb screws.
8. Dispose of the sealed bag containing the used filter(s) per the CDCs recommendations.

MAINTENANCE

1. **Circuit Breaker** - The unit is protected by a circuit breaker on the right side of the unit. In the unlikely event there is an overload condition the breaker may trip. If this happens reset the breaker by pushing on the white button until it clicks into place.
2. **Motor Protection** - If the motor becomes too hot it will automatically shutoff to prevent damage. To reset the thermal gauge, turn off or unplug the unit and allow the motor to cool down. Once it has cooled you may turn it back on and continue use.
3. **Motor Brushes** - This long life motor does not have replaceable brushes. Replacement motors can be ordered as P/N 97041.

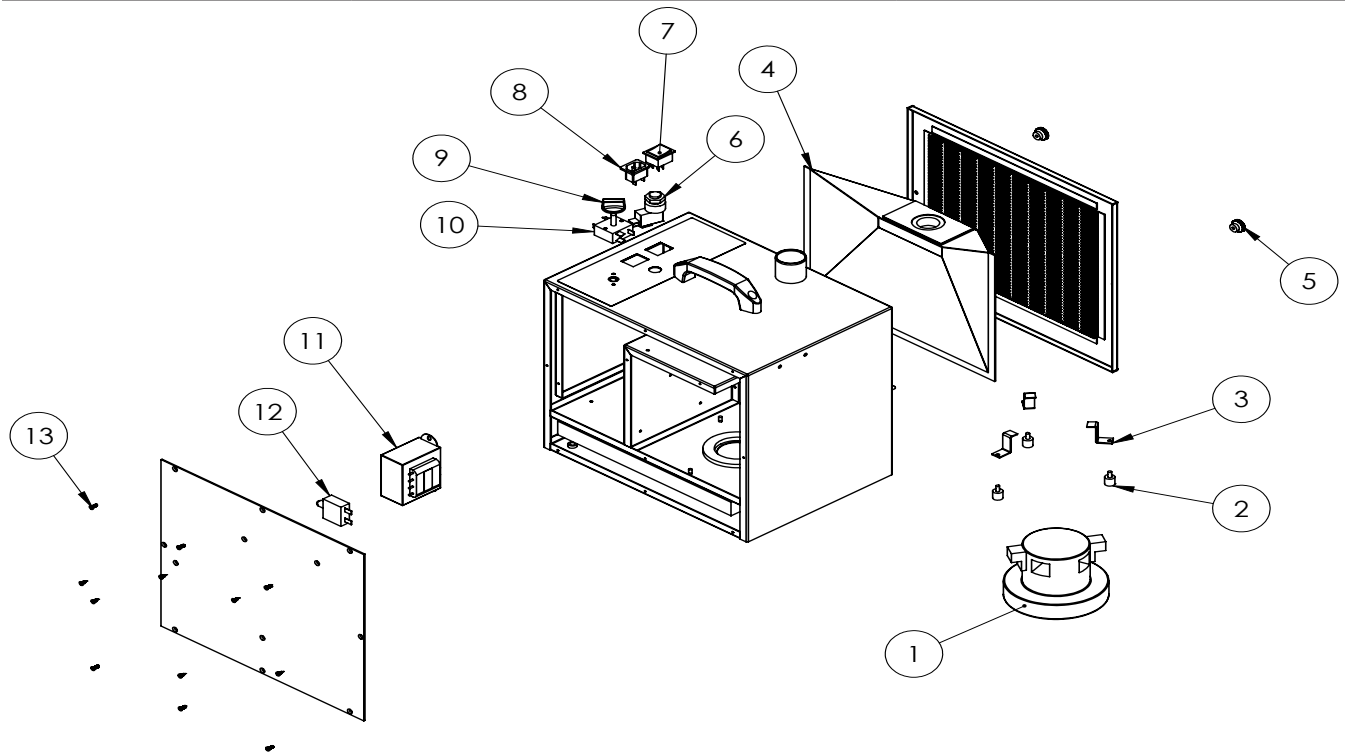
VANGUARD GOLD MOBILE

EXTRAORAL SUCTION

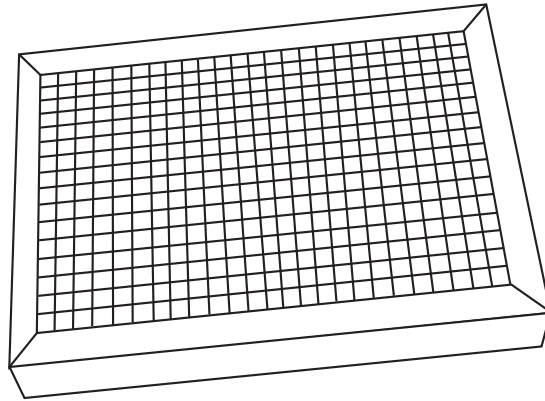
REPLACEMENT PARTS

The following items are offered to enhance the usage of your quality Vaniman unit. These items can be order through your supplier using the following part numbers. Please feel free to contact Vaniman Mfg. Co. with questions regarding our products.

| Fig. # | Description | Part Number |
|---------------|--|--------------------------|
| 1 | Replacement Motor | 97041 |
| 2 | Motor Mount | 2921 |
| 3 | Motor Clip | 97040 |
| 4 | Replacement Filter Bag 3-pack Replacement Filter Bag 5-pack | VMC-A400-3 VMC-A400-5 |
| 5 | Front Cover Thumb Screws | 2984 |
| 6 | Remote Plug Air Switch | 1442 |
| 7 | Power Switch ON/OFF | 2904 |
| Not Shown | Protective Switch Cover | 1003B |
| 8 | Power Connector | 3010 |
| 9 | Rotary Switch Knob | 1471 |
| 10 | Rotary Switch | 3019 |
| 11 | Transformer | 1419 |
| 12 | Circuit Breaker, 15Amp | 2869 |
| 13 | Back Cover Screw 6-32 X 3/8" FHSMS | 1448A |
| Not Shown | Power Cord | 1422 |



HEPA FILTER



PACKING LIST

1 - HEPA Filter with Gasket

ABOUT THE PRODUCT

This filter kit is designed to make your job more comfortable and safer by removing 99.97% of dust, airborne particles, and any other materials evacuated by the dust collector. The filter is designed to be added to Vaniman Vanguard 1X and 2X, Van-I-Vac, and Voyager dust collectors internally. It is a HEPA grade filter to insure effective filtration.

INSTALLATION INSTRUCTIONS

1. Remove the filter access panel (front cover) from the dust collector.
2. Remove the filter bag from the unit or lift it up to expose the filter slot on the unit.
3. Remove any packaging from the filter cartridge. Carefully align the frame opening over the filter slot of the dust collector.
4. Slide the filter in to place with the gasket material facing upwards.
5. When the filter becomes excessively dirty, or suction is impeded, replace the HEPA cartridge.