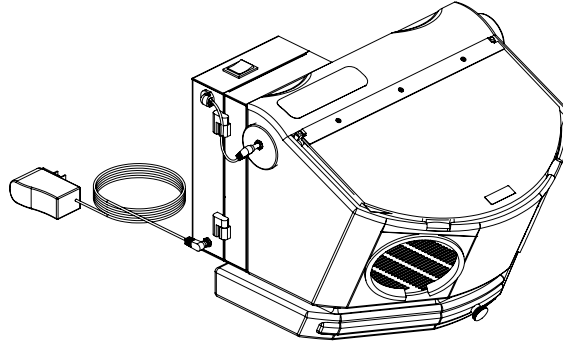


---

## PACKING LIST

---

- 1 - VANiCAB Unit
- 1 - Instructions
- 1 - DC Power Supply



---

## INSTALLATION & OPERATION

---

1. Check that the light assembly is plugged into the fan outlet.
2. Plug the power supply into an electrical outlet and connect to the jack on the side of the fan/filter.
3. Turn on the light and filter system by using the switch on the top of the fan/filter.
4. Empty excess material from the cabinet by removing the tray. A slot on the back, left corner allows for precise pouring.
5. Routinely check the filter. Open the latch on the side of the Fan/Filter Housing. Gently remove the filter and shake it above a trash can to remove the accumulated dust. Replace the filter if any holes or tears appear in the filter material.

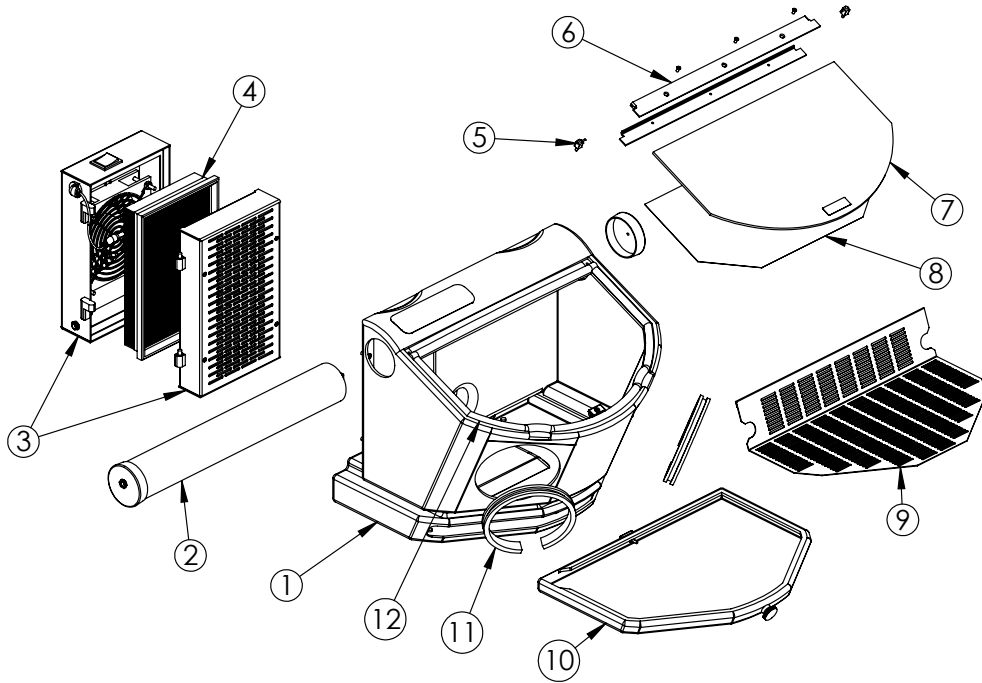


Fig. #	Description	Reorder Part Number
1	Cabinet	not available
2	LED Light Assembly	98107
	Replacement Light Tube (only)	2073A
3	Fan/Filter	2403
4	Replacement Filter	2511
5	Pin-Hinge Assembly	2290
6	Window Bracket Assembly (with window)	2394
7	Replacement Window (with magnet mate)	97963
8	Static Cling (12 pack)	97950
9	Screen	2367
10	Replacement Tray	97966
11	Cuff Holder	2034
Not Shown	Cuff (Black Cloth)	2033
12	Window Gasket Kit	2030A